

**ST LAWRENCE COUNTY
MULTI-USE TRAIL**

**POINTS OF INTEREST –
NORTH TO SOUTH**

- Blue = Brasher Community Connector
- Red = East Section Pilot Trail, Parishville
- Purple = Center Section South Colton to Russell
- Brown = Southern Section Russell to Lewis County

BRASHER COMMUNITY CONNECTOR

- Helena General Store & Parking
- Parking (Brasher Falls)
- Jelly Beans Riverside Campground (Lodging)
- Water's Edge Restaurant (Food)
- Pikes Place Venue
- Playground Parking
- North Lawrence Supermarket & Gas
- Pitstop Diner (Food)
- Fort Jackson Park
- Outlaw Saloon (Food)
- In The Pines, Wine & Spirit (port-a-pottie, picnic table, and soda machine)

**EAST SECTION PILOT TRAIL
(PARISHVILLE)**

- Valero (Gas)
- Parking (Lake Ozonia Rd.)
- Trailhead Parking, Fireman's Field
- Timber Tavern
- Kunoco (Food & Gas)
- Parking (Santamont Rd.)

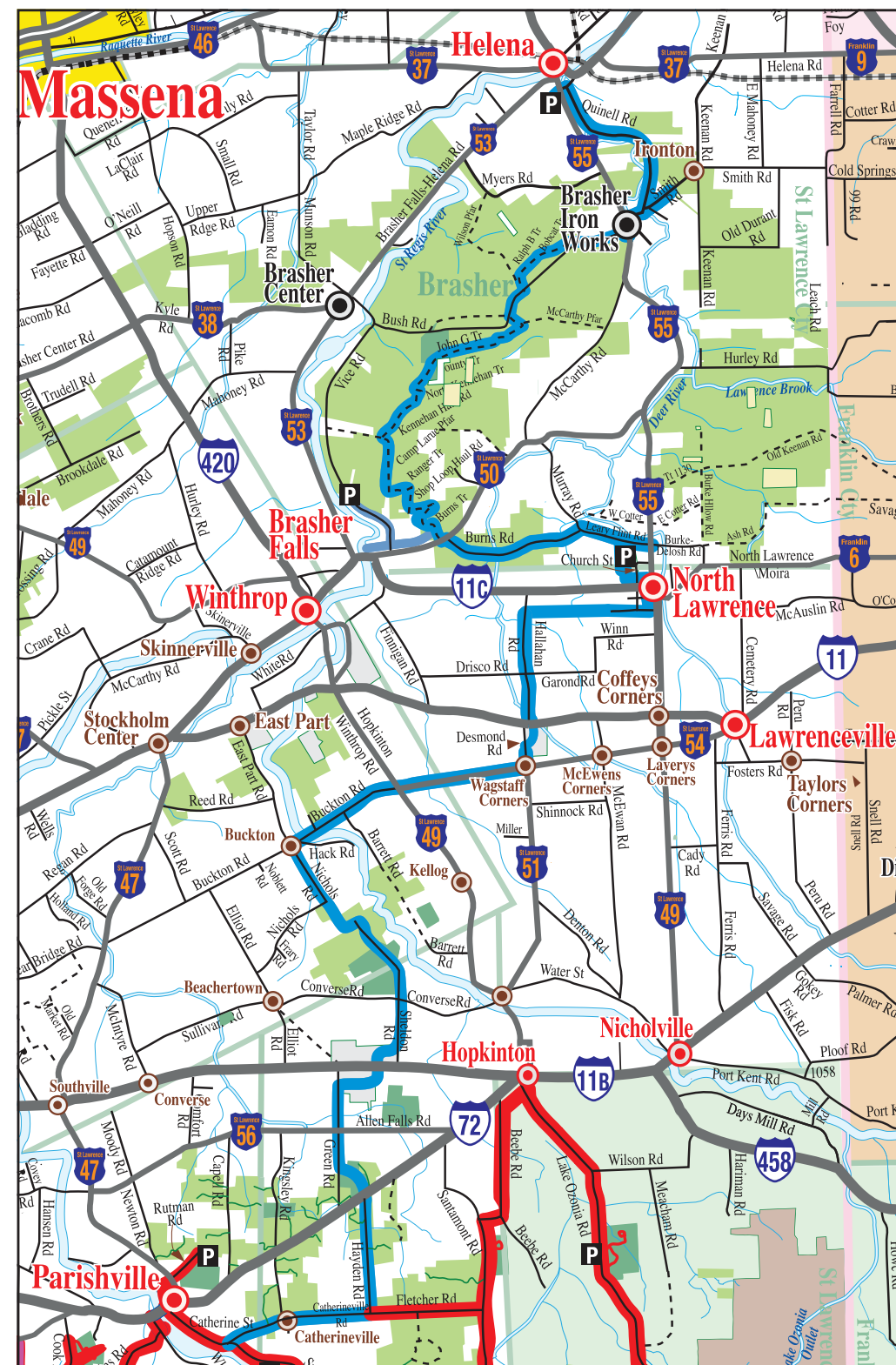
**CENTER SECTION
(SOUTH COLTON TO RUSSELL)**

- RMR Bar & Grill (Food)
- The Red Pine Cone (Food)
- Trailhead Parking
- Camping & Privy
- Gill's Garden
- Camping & Privy
- Pleasant Lake Rest Stop
- Flat Rock Falls
- Twin Falls
- Clarkson Trailhead
- Sinclair Falls
- Basford Falls
- Jocko's Bar & Grill (Food)
- Silver Hill Cabin & Sauna (Lodging)
- Plum Brook Café (Food)
- GT'S Family Restaurant (Food)
- Trailhead Parking Close by
- Kunoco's Food Mart (Food and Gas)
- Woody's Market (Food and Gas)
- Skunk's Nest (Food)

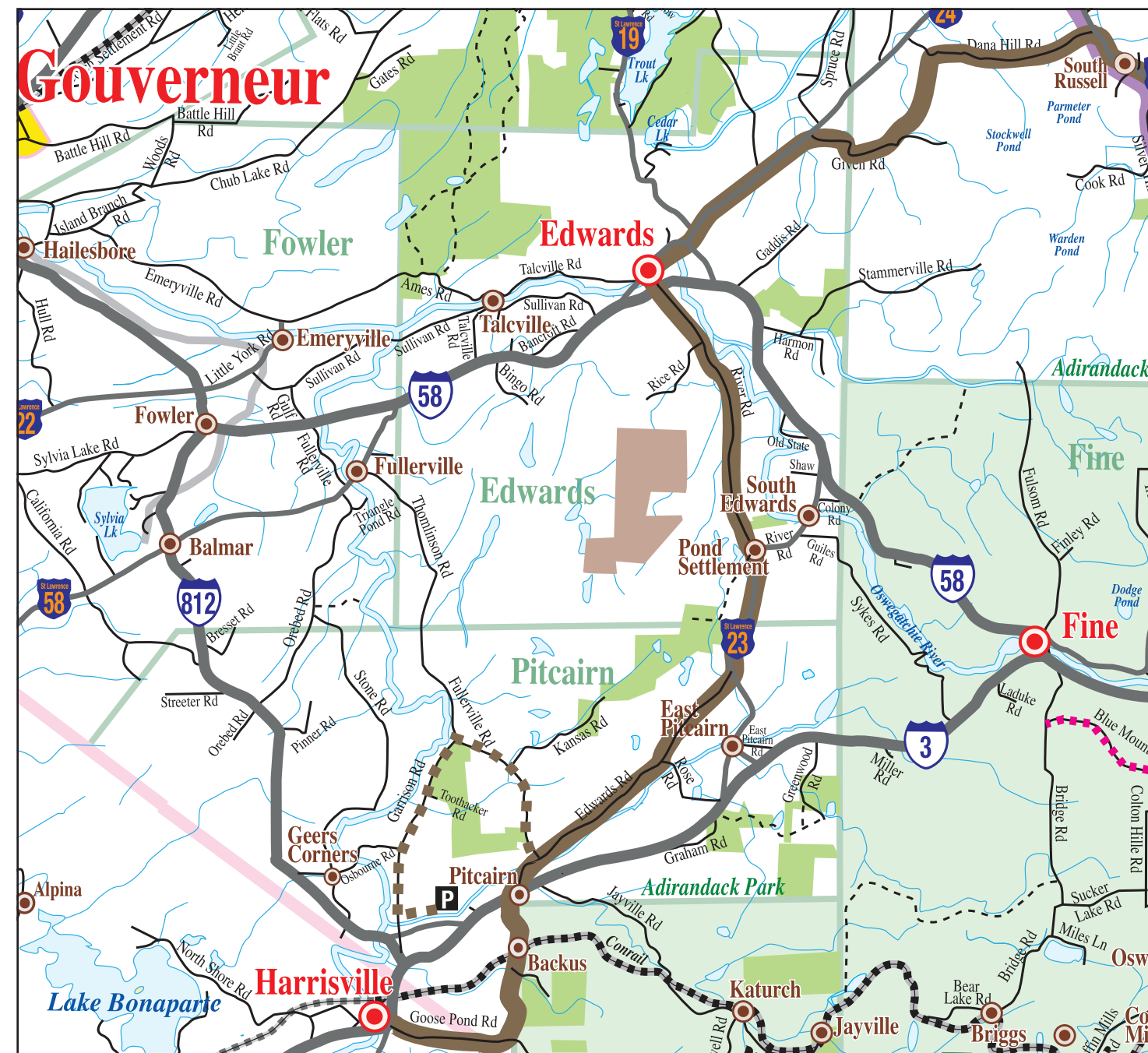
**SOUTHERN SECTION
(RUSSELL TO LEWIS COUNTY)**

- 2E's Restaurant (Food)
- Valero Gas
- The Glow (Food)
- Village Inn (Food)
- The Mystic River Café (Food)
- Slider's Food Mart (Food and Gas)
- Stewart's Shops (Food and Gas)

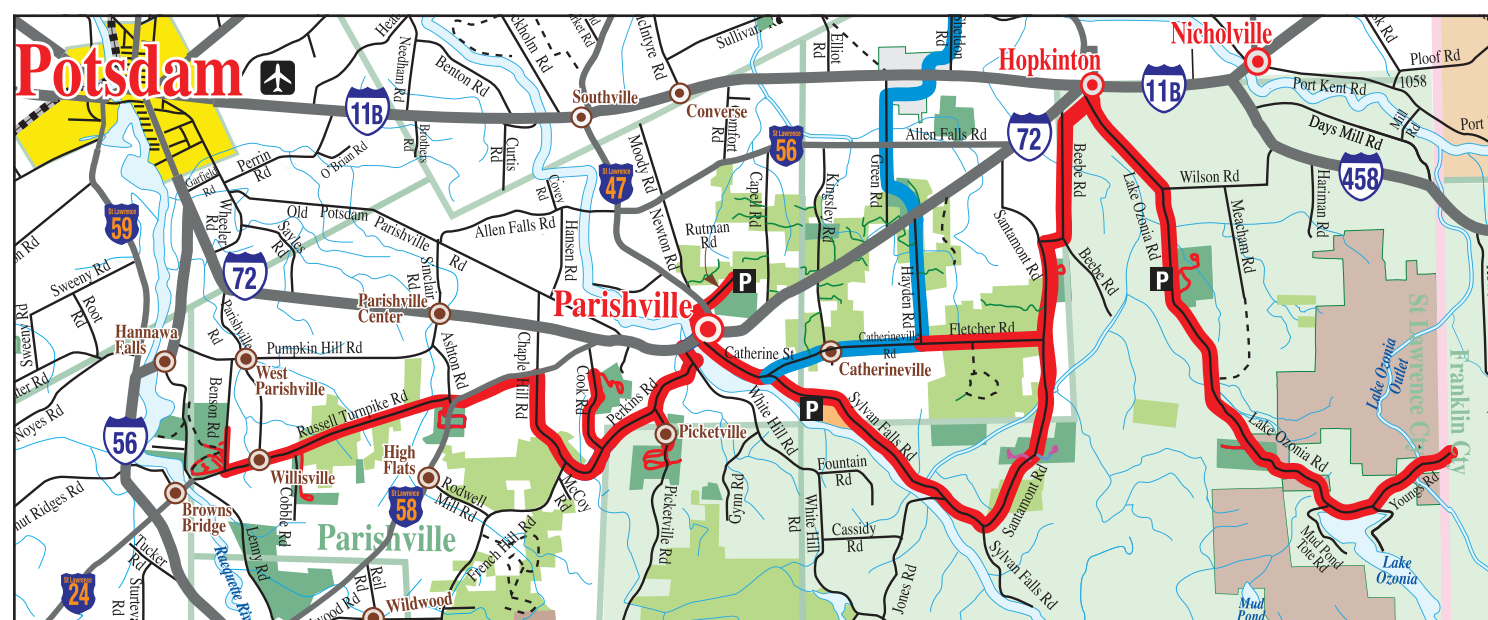
BRASHER COMMUNITY CONNECTOR



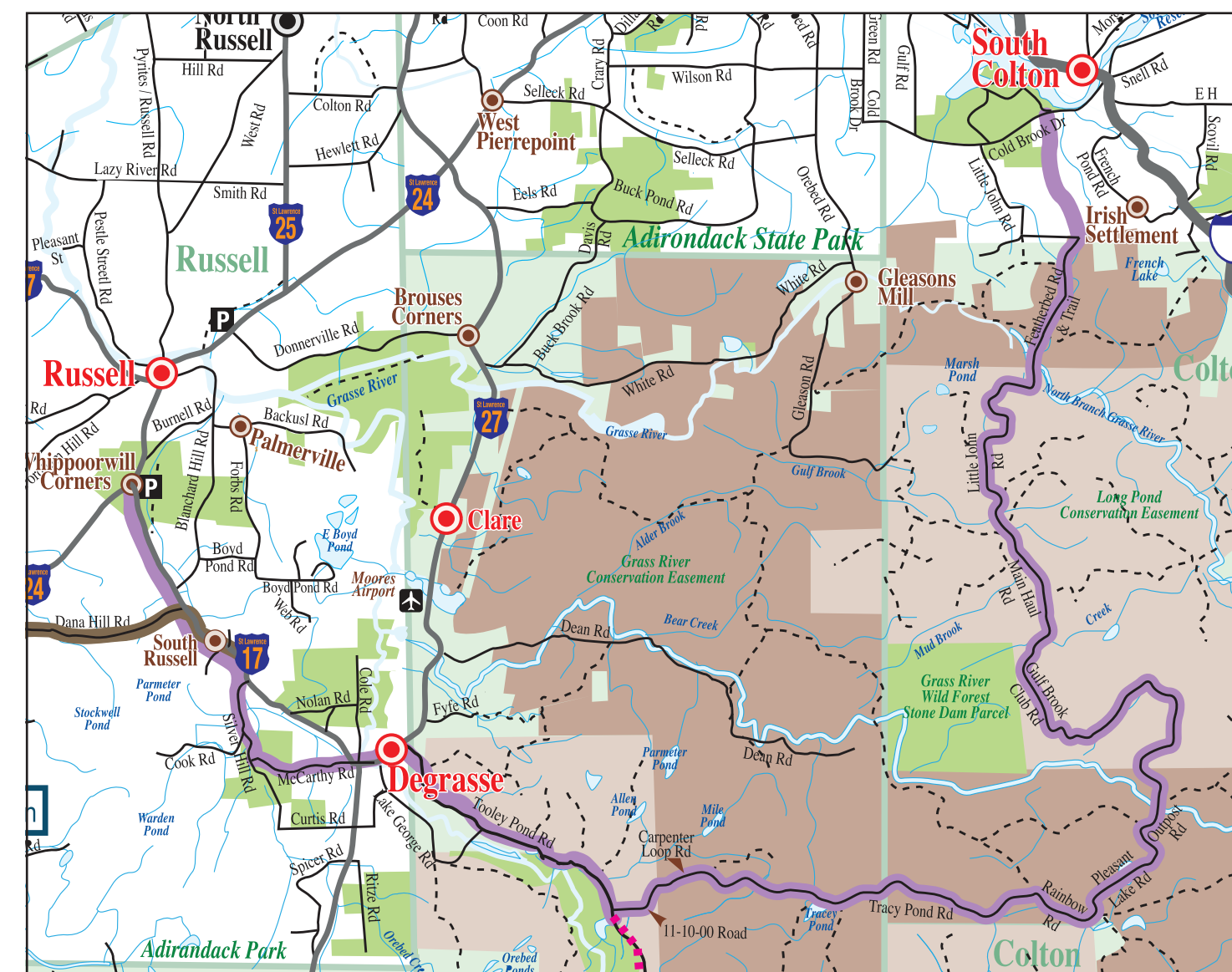
SOUTHERN SECTION



EAST SECTION PILOT TRAIL



CENTER SECTION



TRAIL RULES



St. Lawrence County – Trail Rules

TRAIL PASS



St. Lawrence County – Trail Website

ST. LAWRENCE COUNTY MULTI-USE TRAILS

VISIT US AT THE NEW TRAILS WEBSITE:



Trail Use Administered By:
St. Lawrence County Highway
and Trails Advisory Board
Call 315-379-1542 for more information

Some Trails Have Restrictions - Please Check For Signs!

**UNAUTHORIZED
MOTOR VEHICLES
PROHIBITED**
Public ATV/UTV's
are not allowed
on this trail



Public ATV use on Grass River and Tooley Pond Conservation Easements is only allowed on the St Lawrence County Multi-use Trail when trail is open (May 15-Sept 15).
All other areas of the properties are off limits to public ATV use!
If public ATV use continues to occur in areas other than on the St Lawrence County Multi-use Trail, public ATV use may be prohibited.

Enjoy the Outdoors? Have interest or talents you would like to share? Enjoy helping people? Concerned about our County's natural and cultural resources? St. Lawrence County's trails depend on local user groups.

**Join a Club In Your Area!
Share The Fun and Support Public Trails**
Information on groups in your area is available at trailhead parking areas and local businesses.
Volunteers make trails happen!



Please Note:
You are Responsible for Knowing the Laws that Apply to your Use and to the Location where you Recreate.
The way you use the trail will influence trail management decisions and policies.

**St. Lawrence
County
MULTI-USE
TRAIL
MAP**

Published by the
**St. Lawrence County
Trails Advisory Board**



**Building the Future for the
North Country**