

**ST LAWRENCE COUNTY  
MULTI-USE TRAIL**

**POINTS OF INTEREST –  
NORTH TO SOUTH**

- Blue = Brasher Community Connector
- Red = East Section Pilot Trail, Parishville
- Purple = Center Section South Colton to Russell
- Brown = Southern Section Russell to Lewis County

**BRASHER COMMUNITY CONNECTOR**

- Helena General Store & Parking
- Parking (Brasher Falls)
- Jelly Beans Riverside Campground (Lodging)
- Water's Edge Restaurant (Food)
- Pikes Place Venue
- Playground Parking
- North Lawrence Supermarket & Gas
- Pitstop Diner (Food)
- Fort Jackson Park
- Outlaw Saloon (Food)
- In The Pines, Wine & Spirit (port-a-pottie, picnic table, and soda machine)

**EAST SECTION PILOT TRAIL  
(PARISHVILLE)**

- Valero (Gas)
- Parking (Lake Ozonia Rd.)
- Trailhead Parking, Fireman's Field
- Timber Tavern
- Kunoco (Food & Gas)
- Parking (Santamont Rd.)

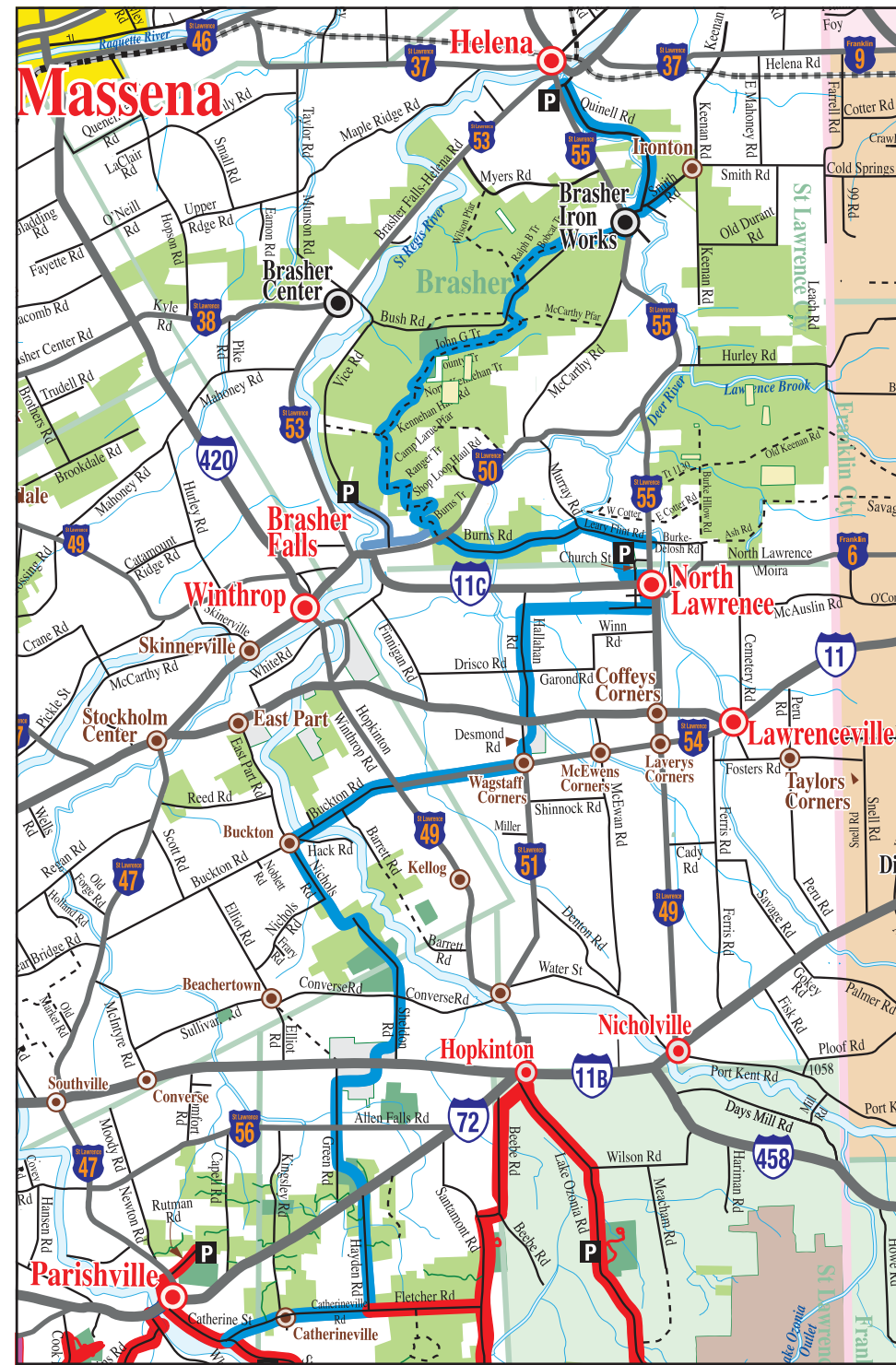
**CENTER SECTION  
(SOUTH COLTON TO RUSSELL)**

- RMR Bar & Grill (Food)
- The Red Pine Cone (Food)
- Trailhead Parking
- Camping & Privy
- Gill's Garden
- Camping & Privy
- Pleasant Lake Rest Stop
- Flat Rock Falls
- Twin Falls
- Clarkson Trailhead
- Sinclair Falls
- Basford Falls
- Jocko's Bar & Grill (Food)
- Silver Hill Cabin & Sauna (Lodging)
- Plum Brook Café (Food)
- GT's Family Restaurant (Food)
- Trailhead Parking Close by
- Kunoco's Food Mart (Food and Gas)
- Woody's Market (Food and Gas)
- Skunk's Nest (Food)

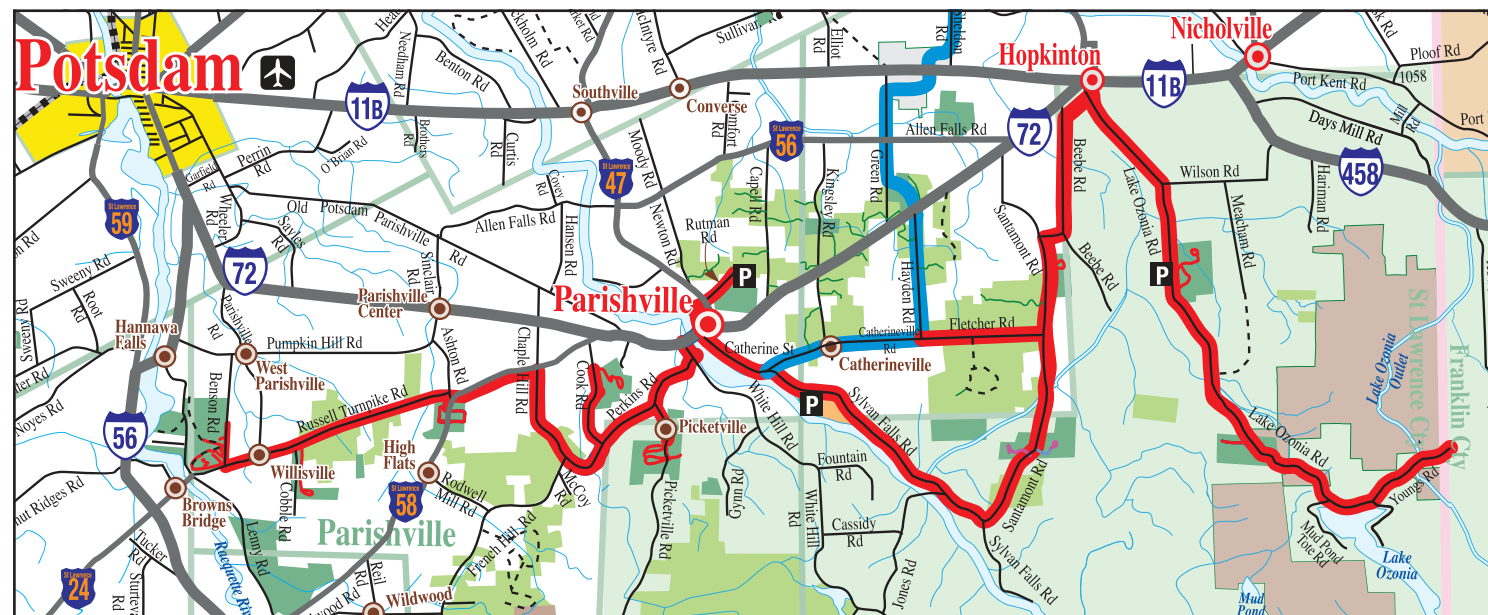
**SOUTHERN SECTION  
(RUSSELL TO LEWIS COUNTY)**

- 2E'S Restaurant (Food)
- Valero Gas
- The Glow (Food)
- Village Inn (Food)
- The Mystic River Café (Food)
- Slider's Food Mart (Food and Gas)
- Stewart's Shops (Food and Gas)

**BRASHER COMMUNITY CONNECTOR**



**EAST SECTION PILOT TRAIL**



**TRAIL RULES**



St. Lawrence County – Trail Rules

**TRAIL PASS**



St. Lawrence County – Trail Website

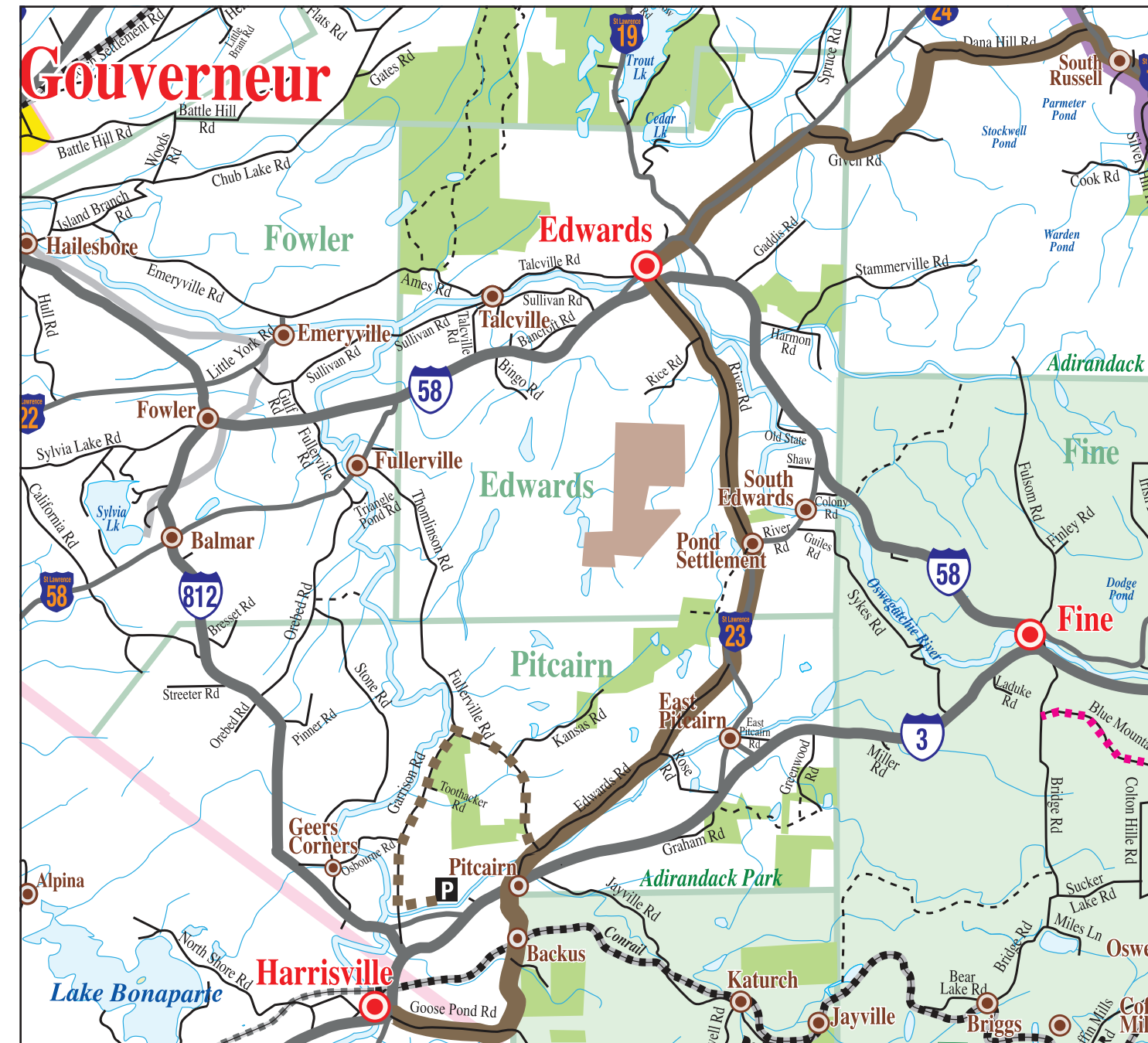
**ST. LAWRENCE COUNTY MULTI-USE TRAILS**

VISIT US AT THE NEW TRAILS WEBSITE:

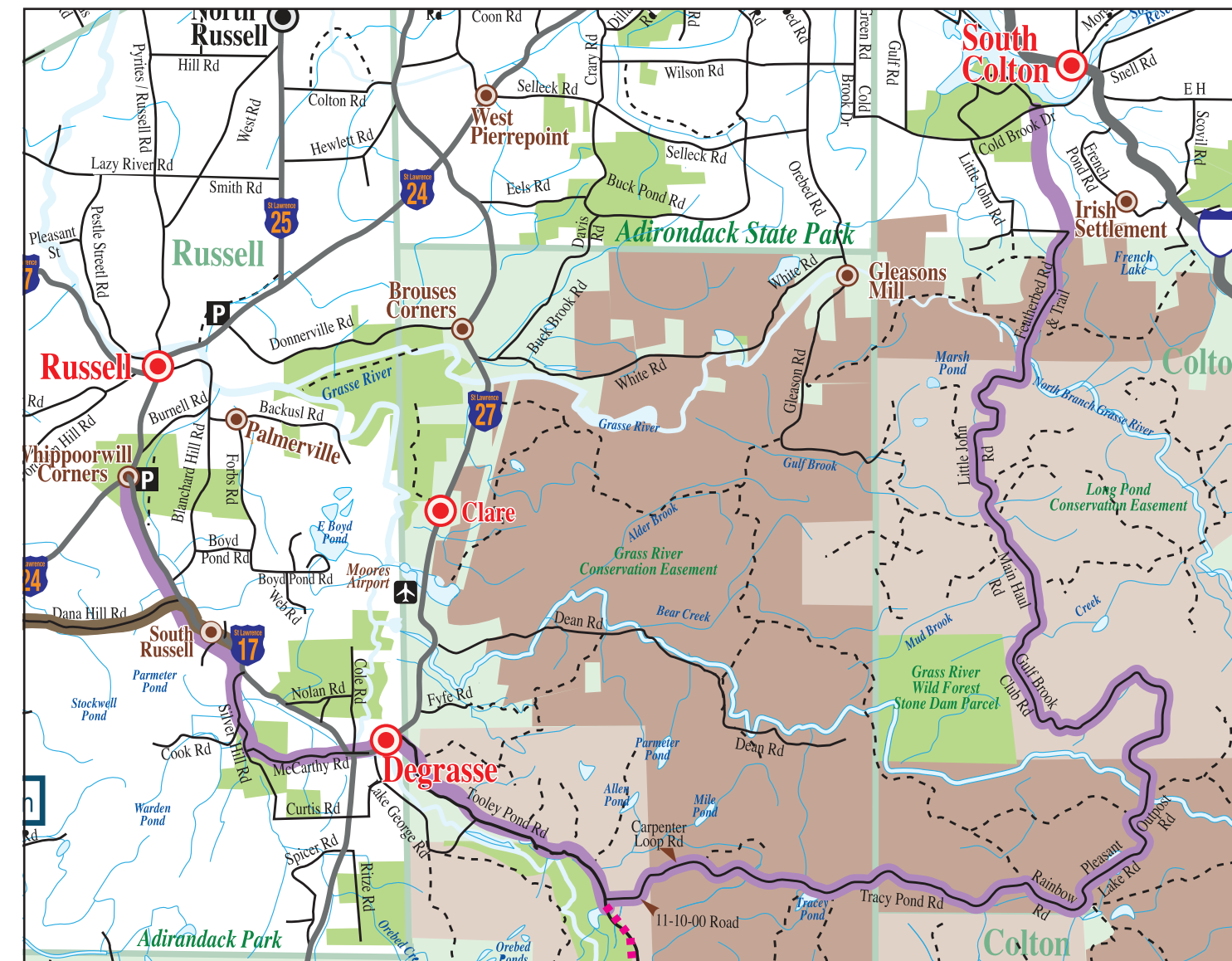


Trail Use Administered By:  
St. Lawrence County Highway  
and Trails Advisory Board  
Call 315-379-1542 for more information

**SOUTHERN SECTION**



**CENTER SECTION**



Some Trails Have Restrictions - Please Check For Signs!

**UNAUTHORIZED  
MOTOR VEHICLES  
PROHIBITED**

Public ATV/UTV's  
are not allowed  
on this trail

St Lawrence County  
Multi-use Trail



Public ATV use on Grass River and Tooley Pond Conservation Easements is only allowed on the St Lawrence County Multi-use Trail when trail is open (May 15-Sept 15).

All other areas of the properties are off limits to public ATV use!

If public ATV use continues to occur in areas other than on the St Lawrence County Multi-use Trail, public ATV use may be prohibited.

Enjoy the Outdoors? Have interest or talents you would like to share? Enjoy helping people? Concerned about our County's natural and cultural resources? St. Lawrence County's trails depend on local user groups.

**Join a Club In Your Area!**  
Share the fun and support public trails  
Information on groups in your area is available at trailhead parking areas and local businesses.  
**Volunteers make trails happen!**



**Please Note:**

You are Responsible for Knowing the Laws that Apply to your Use and to the Location where you Recreate.  
The way you use the trail will influence trail management decisions and policies.

**St. Lawrence  
County  
MULTI-USE  
TRAIL  
MAP**

Published by the  
**St. Lawrence County  
Trails Advisory Board**



**Building the Future for the  
North Country**

St. Lawrence County ATV Trails - Open May 15 to Sept. 15 (Unless Otherwise Posted)

Blue = Brasher Community Connector	Active Railroad Line	St. Lawrence County
Red = East Section Pilot Trail	Trail to Adirondack ATV Club	Adirondack Park Portion of St. Lawrence County
Purple = Center Section	Proposed New Trail	DEC State Lands, Includes State Forests, Forest Preserve Lands, and Wildlife Management Areas
Brown = Southern Section		County Forest Land
Parking		Private Land Over Which Our Trails Run
		DEC Conservation Easements

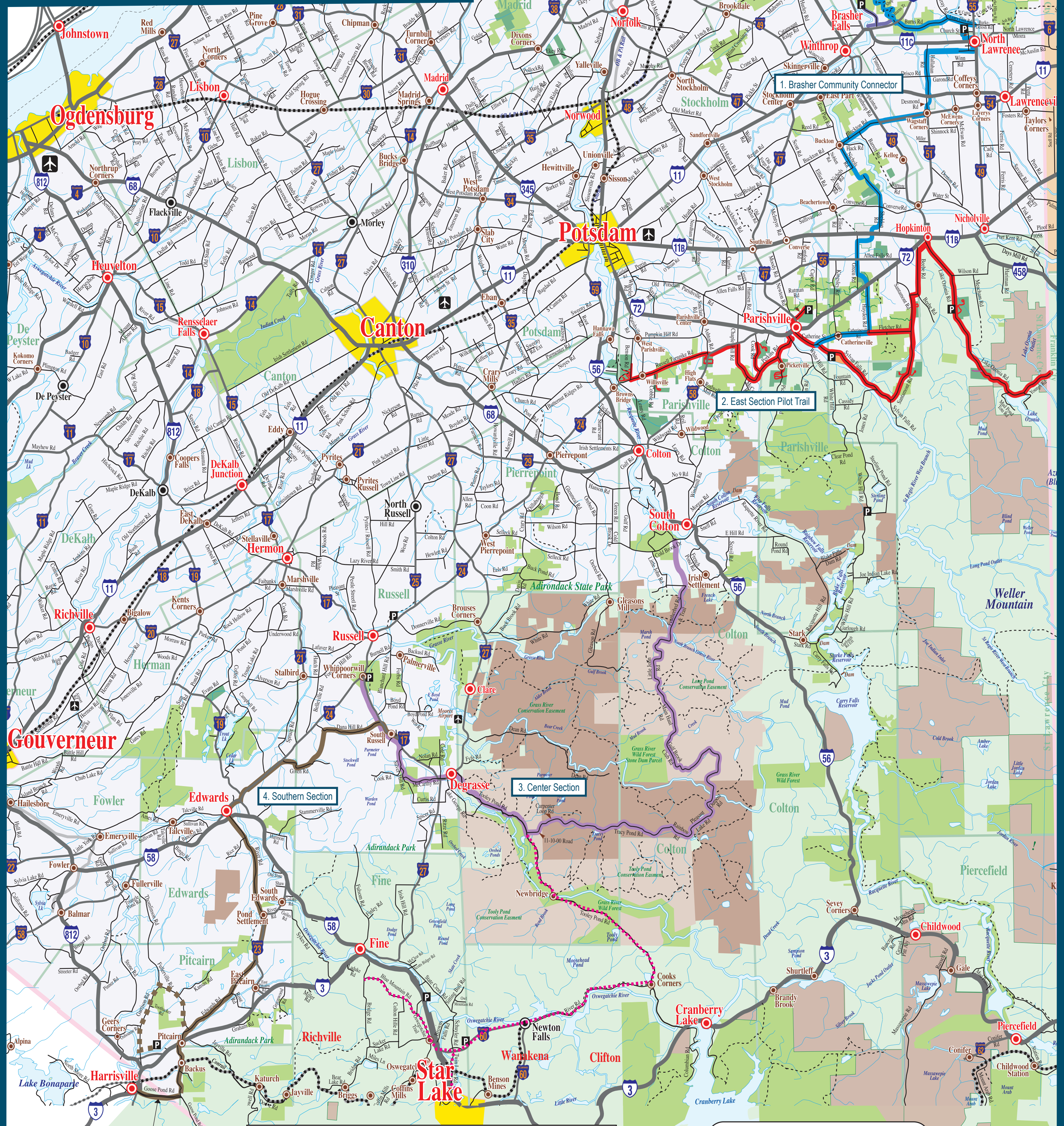
**Mileage Distance of the Trails**

Brasher Community Connector 40 miles  
 East section 51 miles  
 Center section 39 miles  
 Southern section 24 miles

**153 Total Trail Miles - See Points Of Interest**

Town of Brasher (Old Town Garage) - 2971 County Rt. 55, Brasher (Town of Helena).  
 Town of Brasher - 181 Vice Rd., Brasher Falls.  
 SLC County Forest - 34 - 428 Sylvan Falls Rd. (south of Catherine St. to Sylvan Falls Rd. Parishville).  
 SLC County Forest - 20 - 555 Lake Ozonia Rd. (South of Route 72 in Hopkinton).  
 Parishville Fireman's Parade Field - 55 Rutman Rd. (North of Route 72 to Route 47 to Rutman St).  
 North Lawrence - Church St. Playground

All Maps are © 2005, 2018  
 May not be reproduced without permission



Connection to Lewis County ATV/UTV

**A Special Thank You**  
 to all of you who have worked so hard to obtain approvals and permissions,  
 to lay out and develop and are continuing the work of expanding and improving  
 our St. Lawrence County Trail System.  
 Your - St. Lawrence County Trails Board

The trail locations on this map are as accurate as possible...however some trails may change after printing.  
 Follow all Trail Markings

Together we achieve the extraordinary