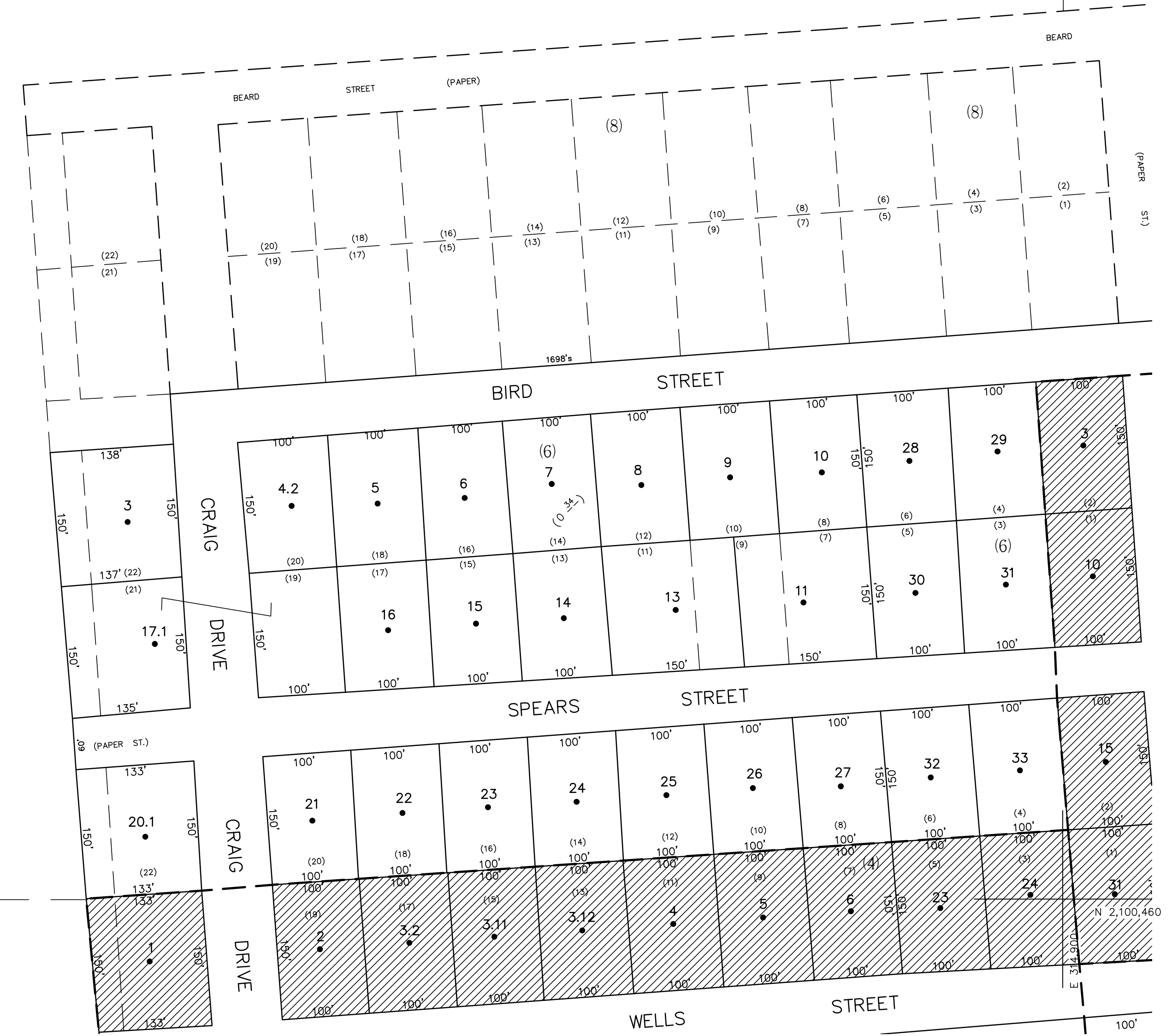
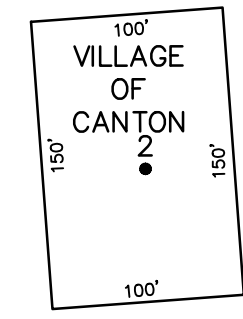
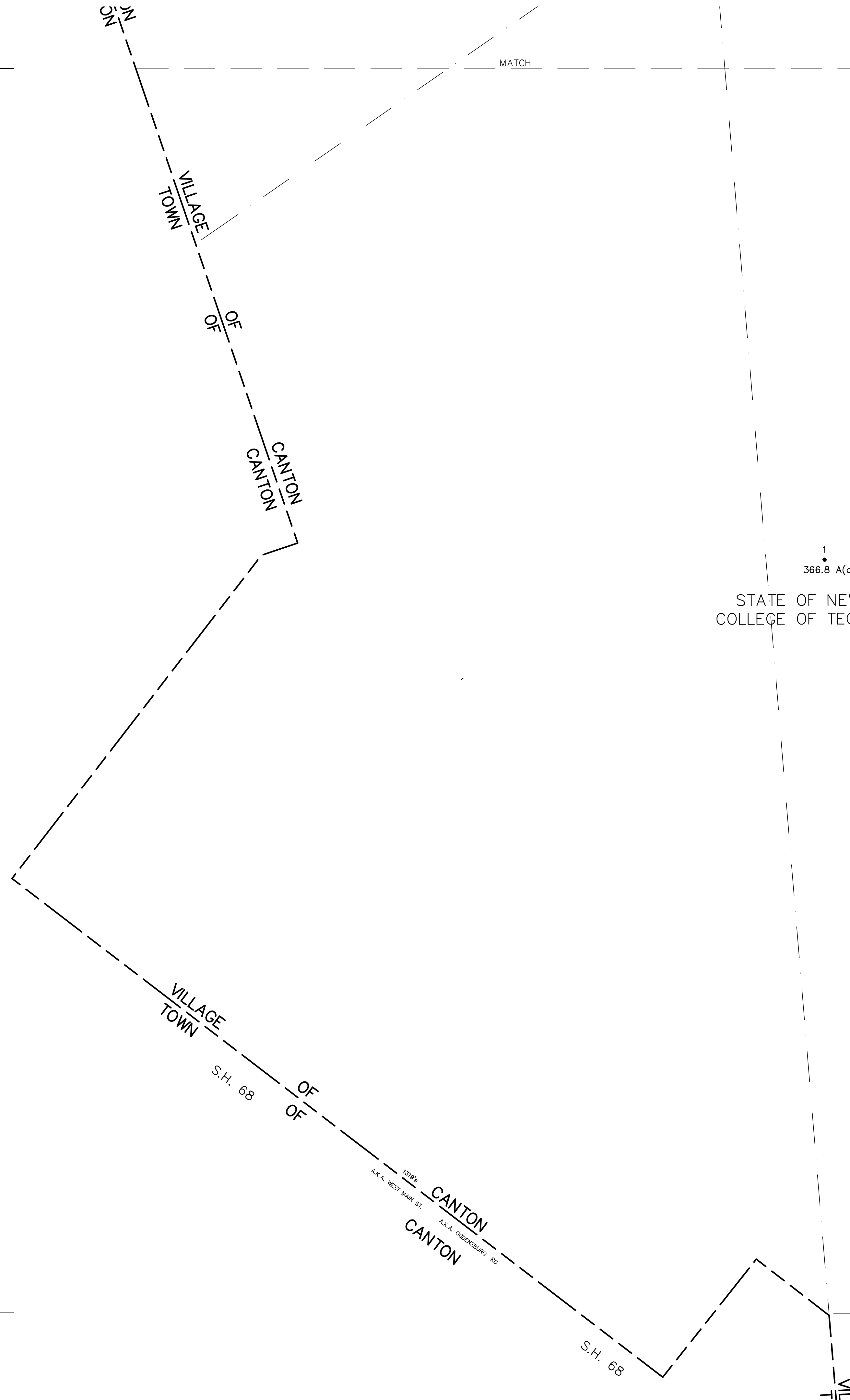


N 2,102,460
E 311,900

N 2,100,460
E 311,900



THIS MAP WAS PREPARED FOR TAX PURPOSES ONLY
NOT TO BE USED FOR CONVEYANCE

UNLESS DRAWN OTHERWISE, ALL PROPERTIES ARE WITHIN THE FOLLOWING DISTRICTS:

SCHOOL	402201	WATER
FIRE	72024	SEWER
LIGHT		AGRICULTURAL

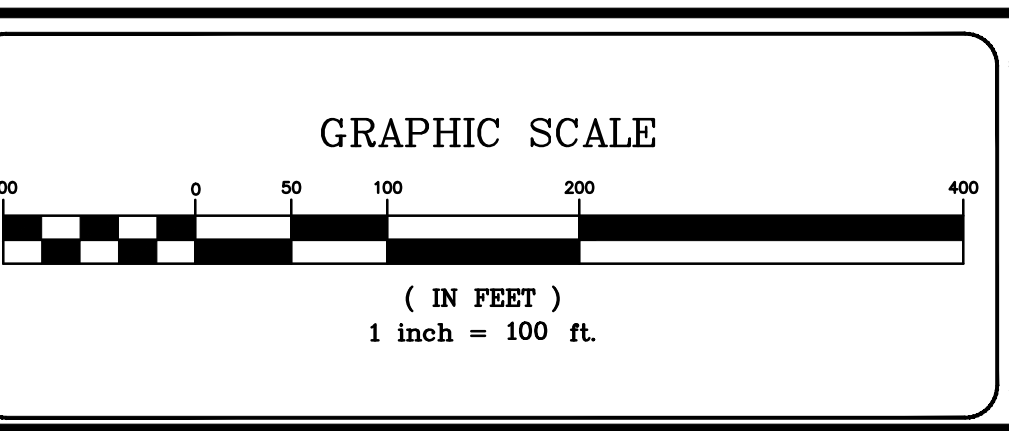
NOTICE OF DISCLAIMER
This map represents a compilation of graphical and textual information from deeds and surveys, a planimetric base map, and digital conversions of hand drawn mylar maps. Errors and omissions can occur from each of these sources; each source represents a large number of records and originators of information. As a practical matter, the County does not warrant the accuracy or completeness of the information portrayed. The end user of these maps agrees to accept the data "as is" with the full knowledge that errors and omissions may exist, and to hold harmless the County for any damages that may result from an inappropriate use of these maps.

DRAWING LEGEND

International Boundary	— — — — —	Denotes Common Owner	
County Boundary	— — — — —	Railroad	— — — — —
Town Boundary	— — — — —	Water	— — — — —
Village Boundary	— — — — —	Block Limit Line	— — — — —
Property or R/W Line	— — — — —	Special District Line	— — — — —
		Subdivision Lot Line	— — — — —

Block No.	1
Parcel No.	27
Subdivision Lot No.	112
Deed Dimension	27'±
Scaled Dimension	27'±
Deed Area	27'±
Calculated Area	148.2A(c)

ST. LAWRENCE COUNTY
NEW YORK
REAL PROPERTY
COUNTY OFFICE BUILDING
CANTON, NEW YORK 13617
(315) 379-2272 OFFICE
(315) 229-3222 FAX



REVISIONS	DATE	BY
7		
6		
5		
4		
3		
2		
1		

KEY MAP

74.080	74.081
88.024	88.025
88.026	88.027
88.028	88.029
88.030	88.031
88.032	88.033
88.034	88.035
88.036	88.037
88.038	88.039
88.040	88.041
88.042	88.043
88.044	88.045

VILLAGE OF: **CANTON**
DISTRICT NO.: **402201**
Date of Conversion: 10/30/2006 Spike

SECTION NO.
88.033
PROPERTY MAP