

14-MARCOY VILLAGE OF CANTON

N 2,104,460 E 311,900

VILLAGE OF CANTON

TOWN VILLAGE

10.9A(c)

ALSO SEE 88.001

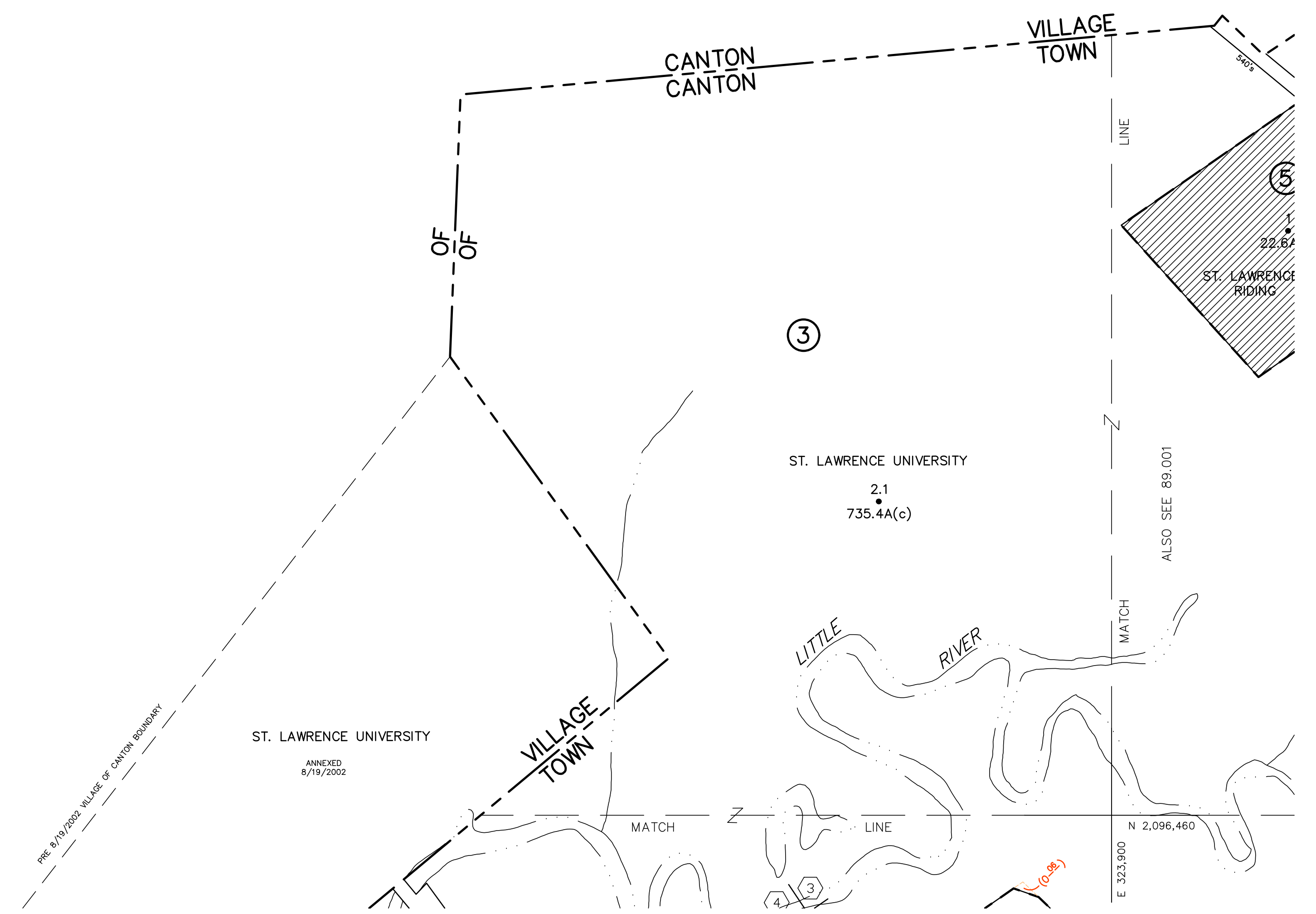
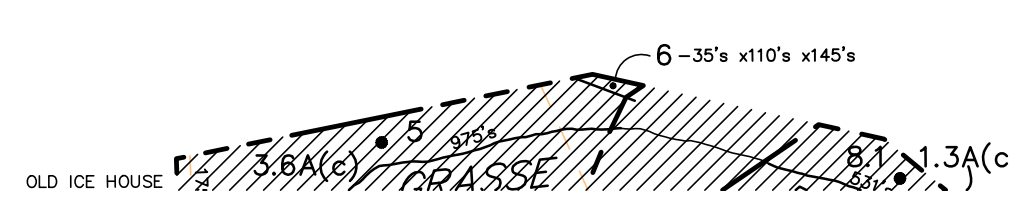
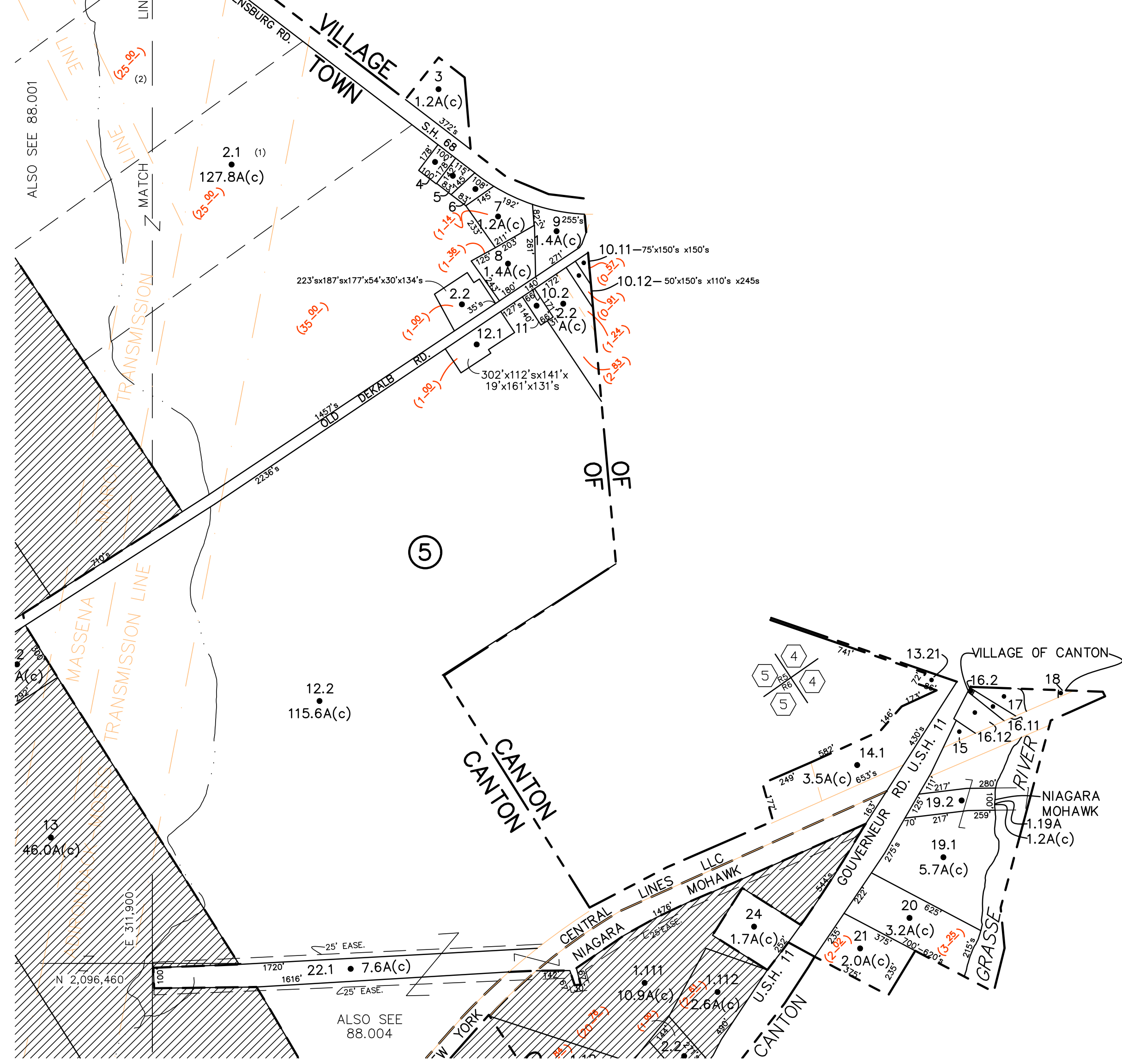
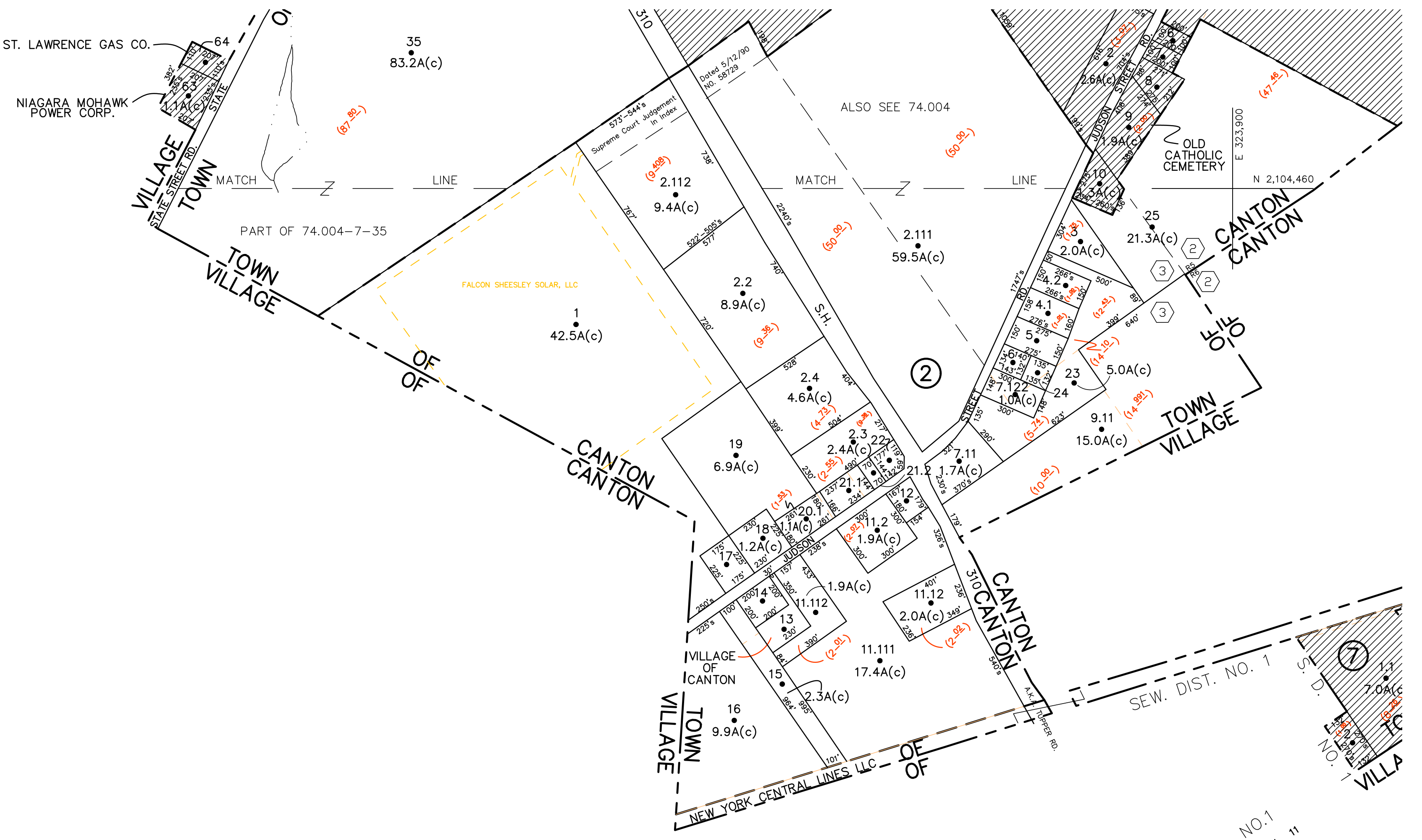
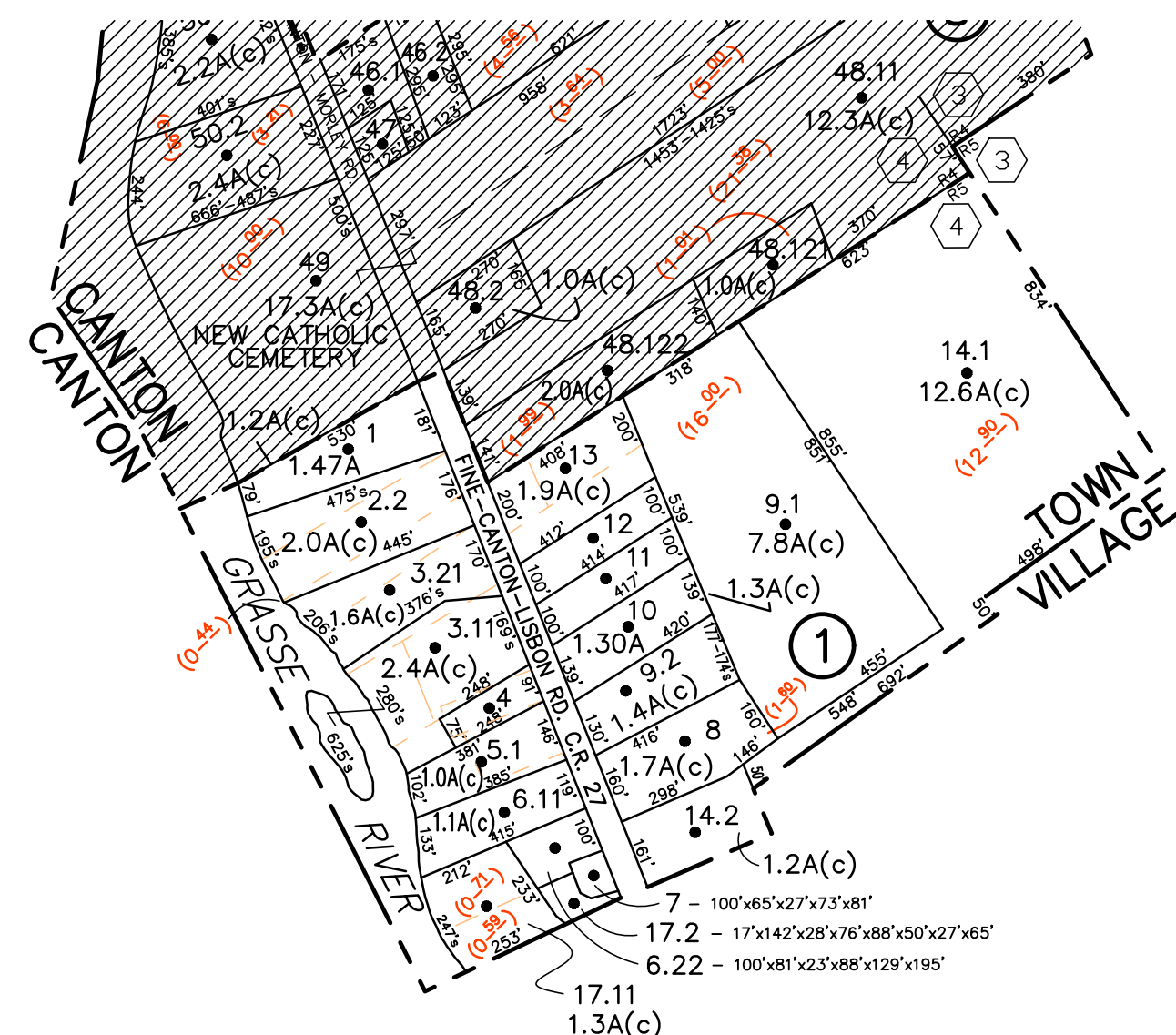
2.1 (1) 127.8A(c)

12.2 115.6A(c)

48.0A(c)

22.1 • 7.6A(c)

ALSO SEE 88.004



UNLESS DRAWN OTHERWISE, ALL PROPERTIES ARE WITHIN THE FOLLOWING DISTRICTS:

SCHOOL 402201 WATER

FIRE 78004 SENIOR

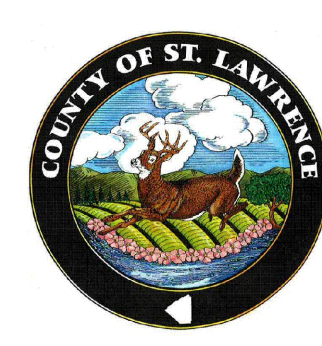
LIGHT 78004 AGRICULTURAL

NOTICE OF DISCLAIMER

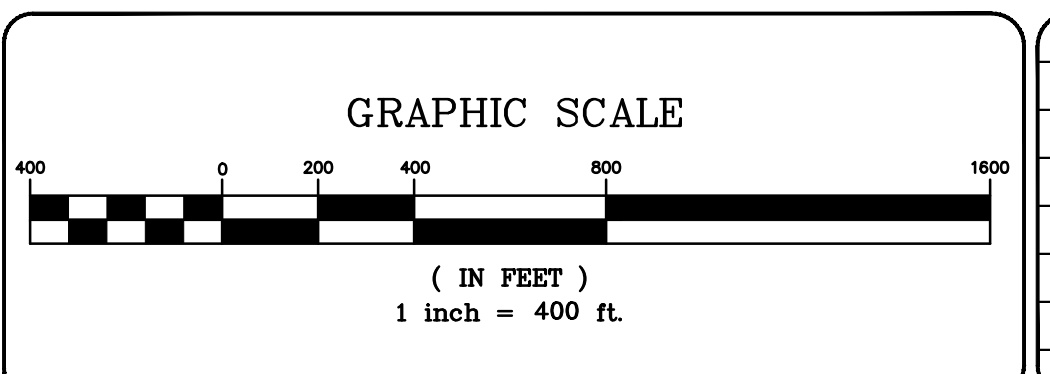
This map represents a compilation of graphical and textual information from deeds and surveys, a planimetric base map, and digital conversions of hand drawn mylar maps. Errors and omissions can occur from each of these sources; each source represents a large number of records and originators of information. As a practical matter, the County does not warrant the accuracy or completeness of the information portrayed. The end user of these maps agrees to accept the data "as is" with the full knowledge that errors and omissions may exist, and to hold harmless the County for any damages that may result from an inappropriate use of these maps.

DRAWING LEGEND

International Boundary	— — — — —	Denotes Common Owner	Z	Block No.	①
Town Boundary	— — — — —	Railroad	— — — — —	Parcel No.	27
Village Boundary	— — — — —	Water	— — — — —	Subdivision Lot No.	(10)
Property or R/W Line	— — — — —	Block Limit Line	— — — — —	Deed Dimension	112'
		Special District Line	— — — — —	Scaled Dimension	27'
		Subdivision Lot Line	— — — — —	Deed Area	(27.3)
				Calculated Area	148.2A(c)



ST. LAWRENCE COUNTY
NEW YORK
REAL PROPERTY
COUNTY OFFICE BUILDING
CANTON, NEW YORK 13617
(315) 379-2272 OFFICE
(315) 229-3222 FAX



7			
6			
5			
4			
3			
2			
1			
	REVISIONS	DATE	BY

KEY MAP		
74.003	74.004	75.003
88.001	88.002	88.001
88.003	88.004	88.003

TOWN OF: CANTON
DISTRICT NO.: 402289
Date of Conversion: 2/15/2008 Spike

SECTION NO.
88.002
PROPERTY MAP

THIS MAP WAS PREPARED FOR TAX PURPOSES ONLY
NOT TO BE USED FOR CONVEYANCE