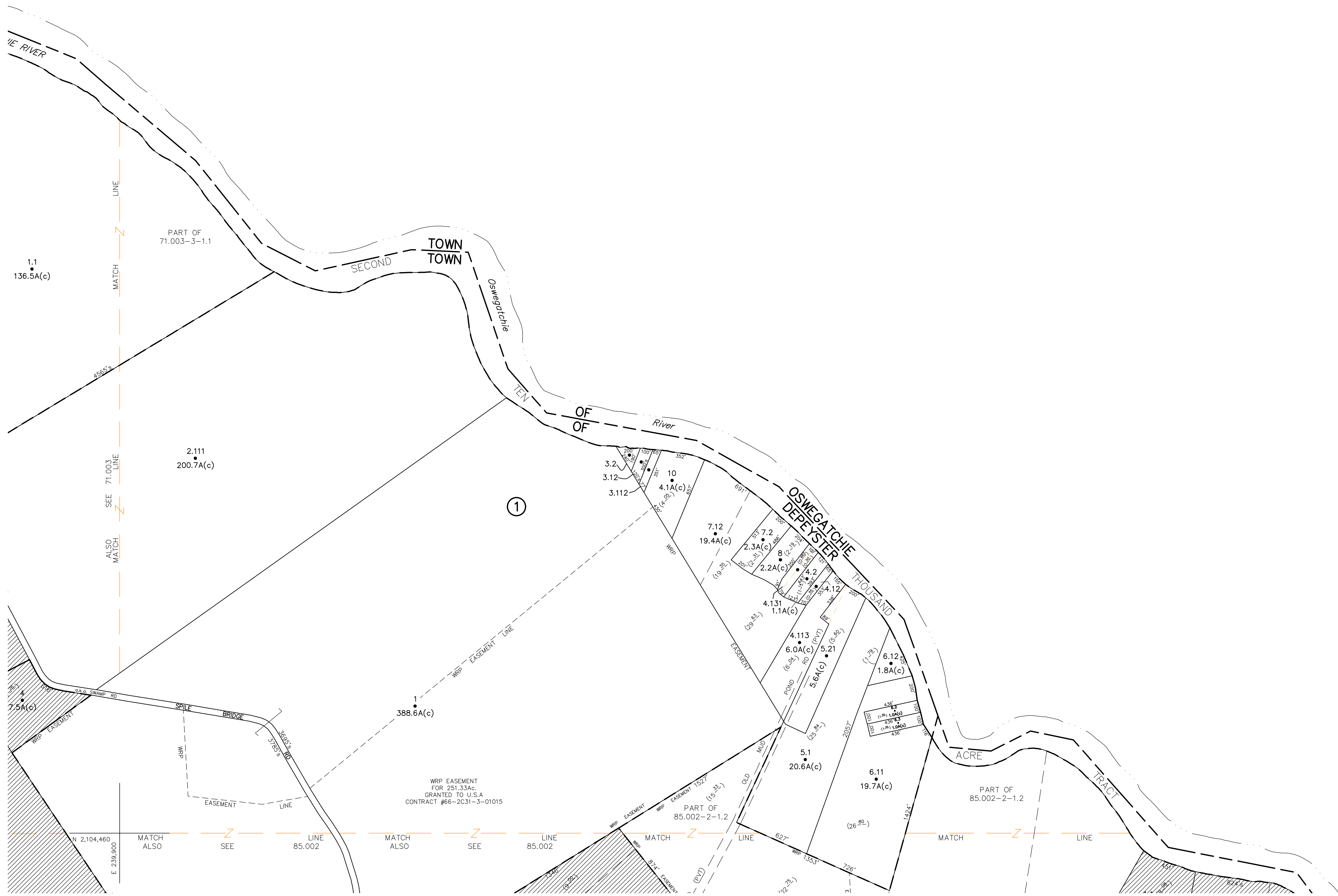


N 2,112,460
E 239,900

N 2,112,460
E 251,900



N 2,104,460
E 251,900

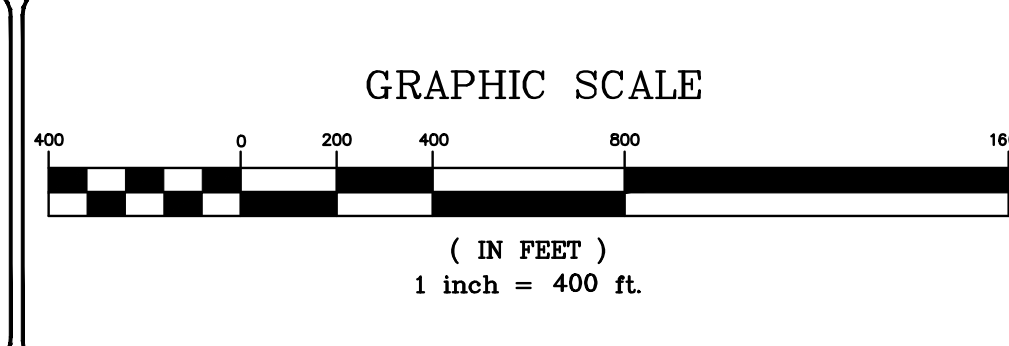
UNLESS DRAWN OTHERWISE, ALL PROPERTIES ARE WITHIN THE FOLLOWING DISTRICTS:

SCHOOL 458404 WATER
FIRE 458404 SEWER
LIGHT 458404 AGRICULTURAL

THIS MAP WAS PREPARED FOR TAX PURPOSES ONLY
NOT TO BE USED FOR CONVEYANCE

NOTICE OF DISCLAIMER
This map represents a compilation of graphical and textual information from deeds and surveys, a planimetric base map, and digital conversions of hand drawn mylar maps. Errors and omissions can occur from each of these sources; each source represents a large number of records and originators of information. As a practical matter, the County does not warrant the accuracy or completeness of the information portrayed. The end user of these maps agrees to accept the data "as is" with the full knowledge that errors and omissions may exist, and to hold harmless the County for any damages that may result from an inappropriate use of these maps.

DRAWING LEGEND	
International Boundary	— — — — —
County Boundary	— — — — —
Town Boundary	— — — — —
Village Boundary	— — — — —
Property or R/W Line	— — — — —
Denotes Common Owner Railroad	— — — — —
Water	— — — — —
Block Limit Line	— — — — —
Special District Line	— — — — —
Subdivision Lot Line	— — — — —
Block No.	①
Parcel No.	27
Subdivision Lot No.	(10)
Deed Dimension	112'
Scaled Dimension	227'
Deed Area	(27.31)
Calculated Area	148.2A(c)



REVISIONS	DATE	BY
7		
6		
5		
4		
3		
2		
1		

KEY MAP

TOWN OF 71.003 OSWEGATCHIE	TOWN OF 72.003 OSWEGATCHIE
71.003	71.004
85.001	85.002
	86.001

TOWN OF: DEPEYSTER
DISTRICT NO.: 403200
Date of Conversion: 10/14/09 JIM

SECTION NO.
71.004
PROPERTY MAP