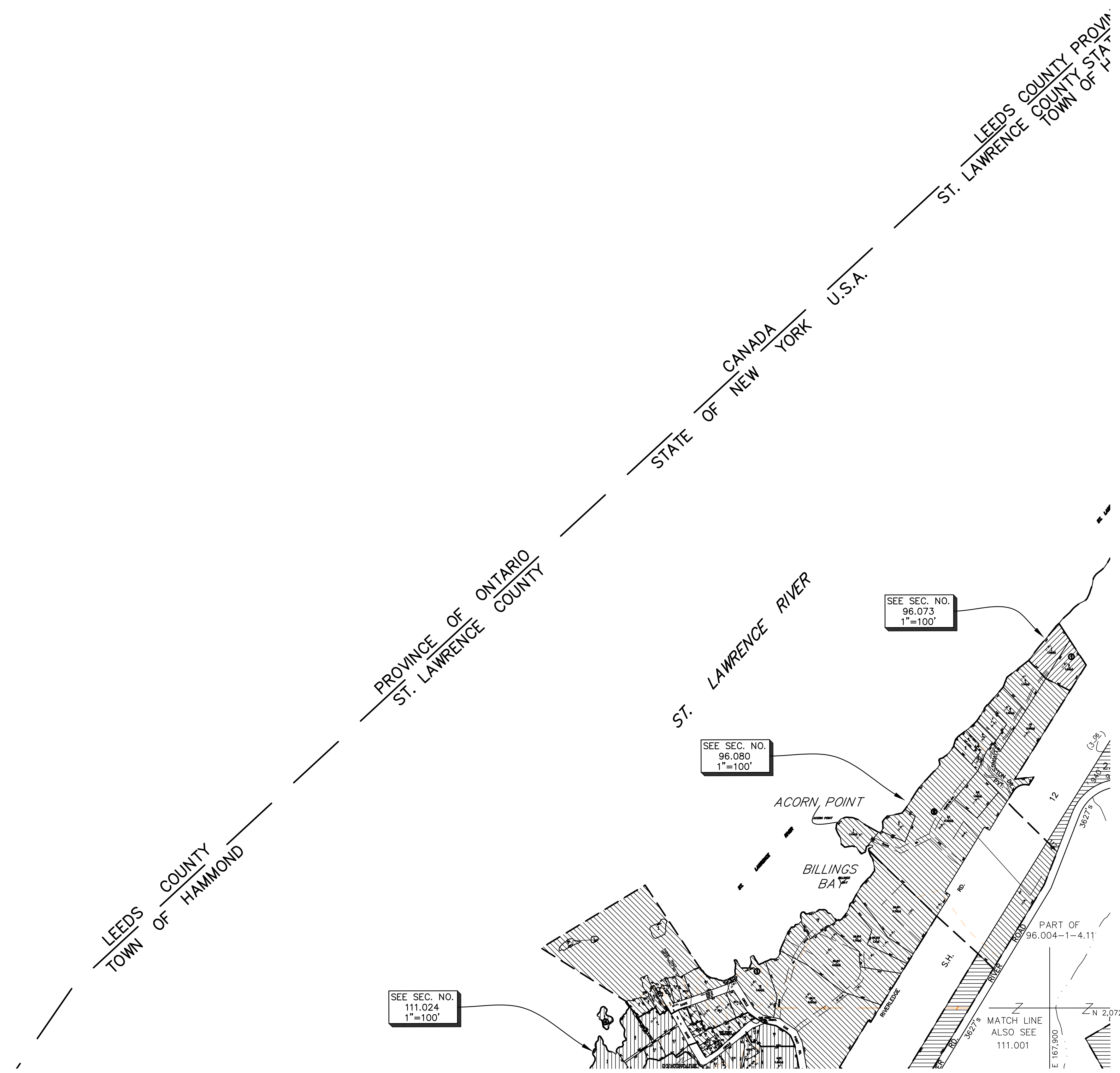
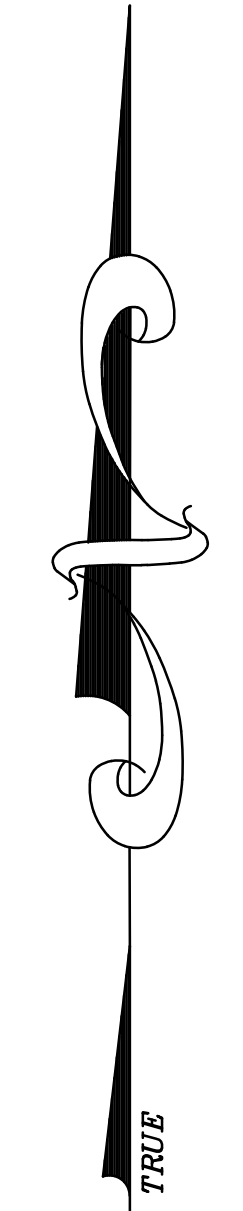


N 2,080,460
E 155,900

N 2,080,460
E 167,000

N 2,072,460
E 155,900



UNLESS DRAWN OTHERWISE, ALL PROPERTIES ARE WITHIN THE FOLLOWING DISTRICTS:

SCHOOL	454201	WATER	
FIRE	7507	SEWER	
LIGHT		AGRICULTURAL	

THIS MAP WAS PREPARED FOR TAX PURPOSES ONLY
NOT TO BE USED FOR CONVEYANCE

NOTICE OF DISCLAIMER

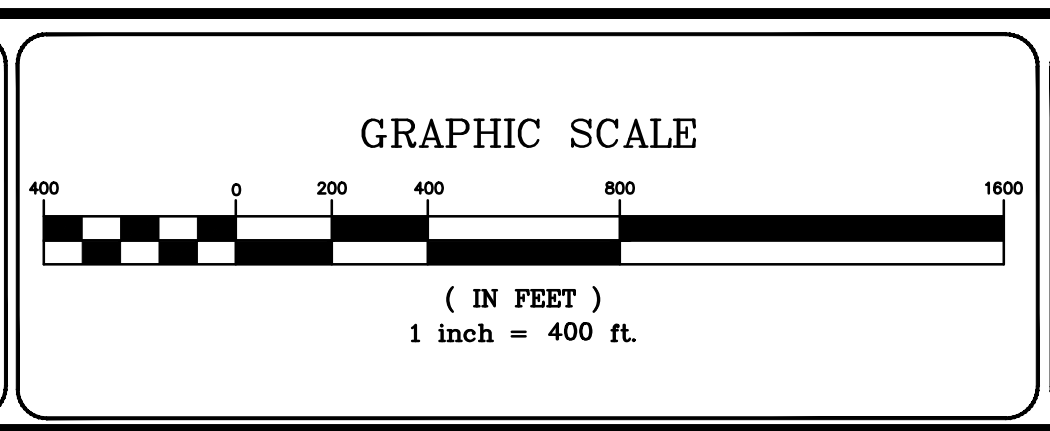
This map represents a compilation of graphical and textual information from deeds and surveys, a planimetric base map, and digital conversions of hand drawn mylar maps. Errors and omissions can occur from each of these sources; each source represents a large number of records and originators of information. As a practical matter, the County does not warrant the accuracy or completeness of the information portrayed. The end user of these maps agrees to accept the data "as is" with the full knowledge that errors and omissions may exist, and to hold harmless the County for any damages that may result from an inappropriate use of these maps.

DRAWING LEGEND

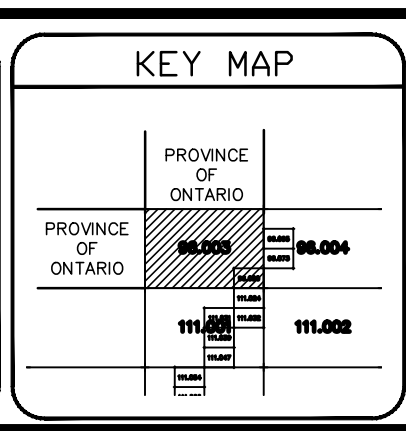
International Boundary	— — — — —	Denotes Common Owner	①
County Boundary	— — — — —	Railroad	27
Town Boundary	— — — — —	Water	(10)
Village Boundary	— — — — —	Block Limit Line	112'
Property or R/W Line	— — — — —	Special District Line	27'
		Subdivision Lot Line	(27.25)
			148.2A(c)

ST. LAWRENCE COUNTY
NEW YORK
REAL PROPERTY

COUNTY OFFICE BUILDING
CANTON, NEW YORK 13617
(315) 379-2272 OFFICE
(315) 229-3222 FAX



7			
6			
5			
4			
3			
2			
1			
	REVISIONS	DATE	BY



TOWN OF: **HAMMOND**

DISTRICT NO.: **404289**

Date of Conversion: 26/26/08 JIM

SECTION NO.
96.003

PROPERTY MAP