

N 2,232,460
E 3,599,900

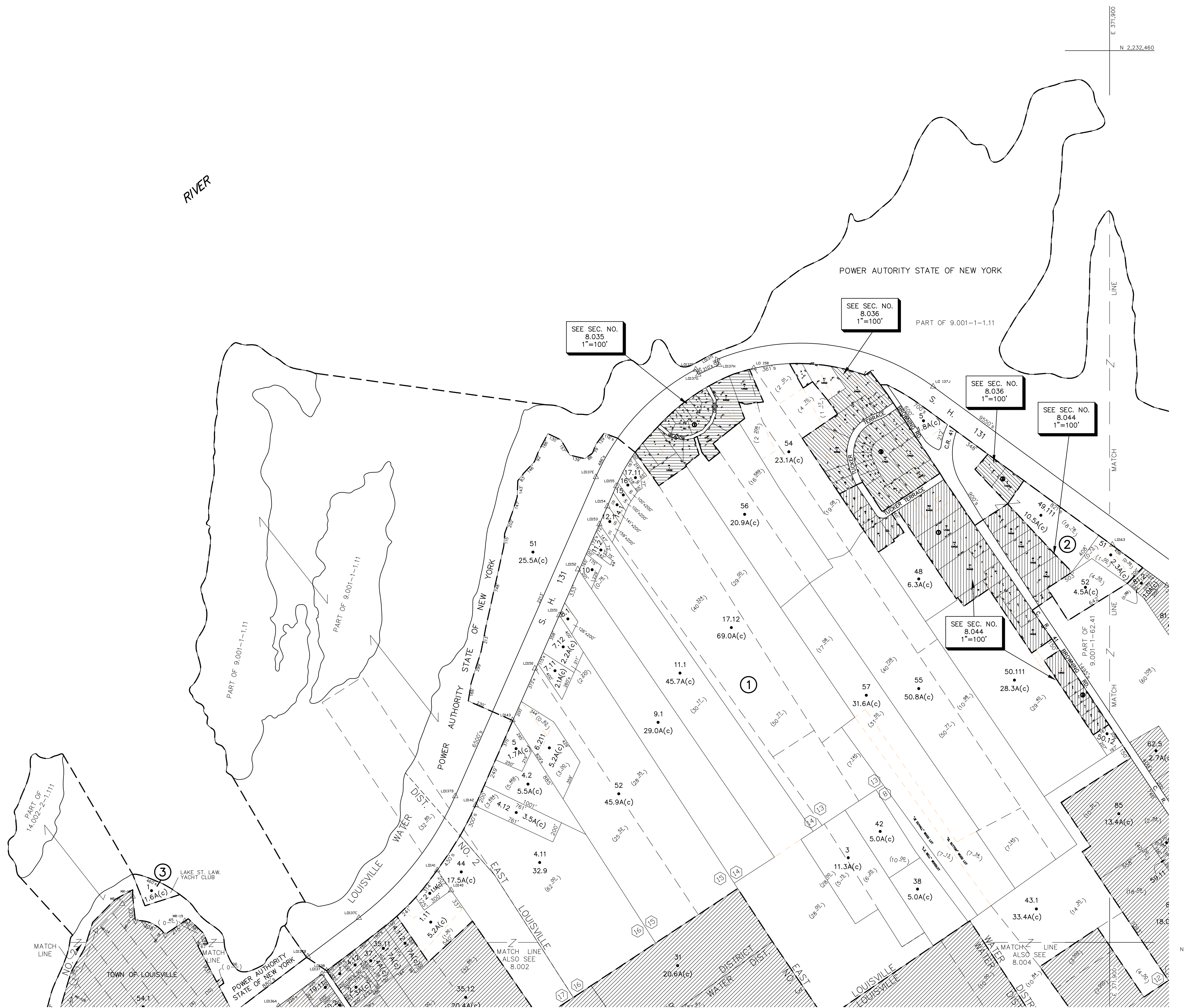
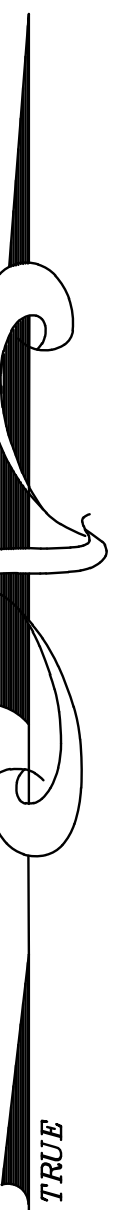
NCE
LOUISVILLE,
OF
STATE OF
NEW YORK

CANADA
U.S.A.

LAWRENCE
RIVER

ST.

E 3,715,500
N 2,232,460



E 3,599,900
N 2,224,460

N 2,224,460

UNLESS DRAWN OTHERWISE, ALL PROPERTIES ARE WITHIN THE FOLLOWING DISTRICTS :

SCHOOL 405801 WATER W0026/W0028
FIRE 17002 SEWER
LIGHT AGRICULTURAL

THIS MAP WAS PREPARED FOR TAX PURPOSES ONLY
NOT TO BE USED FOR CONVEYANCE

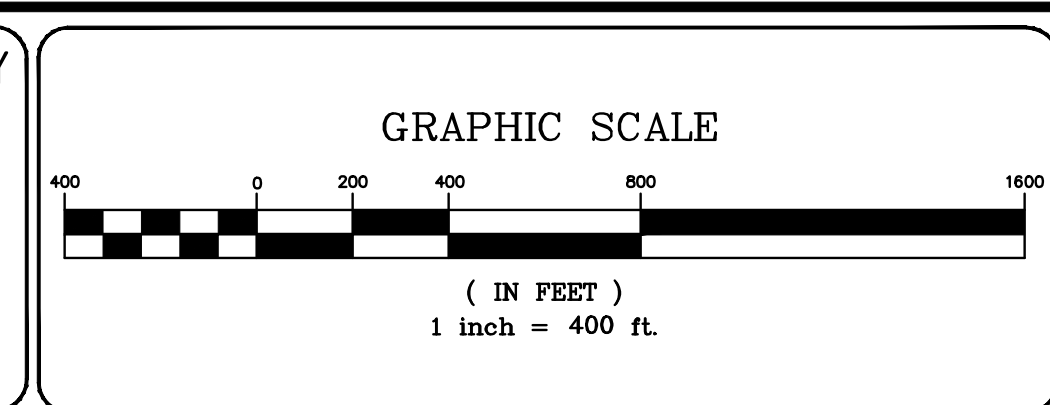
NOTICE OF DISCLAIMER
This map represents a compilation of graphical and textual information from deeds and surveys, a planimetric base map, and digital conversions of hand drawn mylar maps. Errors and omissions can occur from each of these sources; each source represents a large number of records and originators of information. As a practical matter, the County does not warrant the accuracy or completeness of the information portrayed. The end user of these maps agrees to accept the data "as is" with the full knowledge that errors and omissions may exist, and to hold harmless the County for any damages that may result from an inappropriate use of these maps.

DRAWING LEGEND

International Boundary	— — — — —	Denotes Common Owner Railroad	— — — — —
County Boundary	— — — — —	Water	~~~~~
Town Boundary	— — — — —	Block Limit Line	— — — — —
Village Boundary	— — — — —	Special District Line	— — — — —
Property or R/W Line	— — — — —	Subdivision Lot Line	— — — — —

Block No.	1
Parcel No.	27
Subdivision Lot No.	(10)
Deed Dimension	112'
Scaled Dimension	27'
Deed Area	(27.31)
Calculated Area	148.2A(c)

ST. LAWRENCE COUNTY
NEW YORK
REAL PROPERTY
COUNTY OFFICE BUILDING
CANTON, NEW YORK 13617
(315) 379-2272 OFFICE
(315) 229-3222 FAX



7			
6			
5			
4			
3			
2			
1			
	REVISIONS	DATE	BY

KEY MAP

3,004	4,003
8,001	9,001
8,003	8,004
15,001	15,002
16,001	

TOWN OF: **LOUISVILLE**
DISTRICT NO.: **405289**
Date of Conversion 03/01/08 LDC

SECTION NO.
8.002
PROPERTY MAP