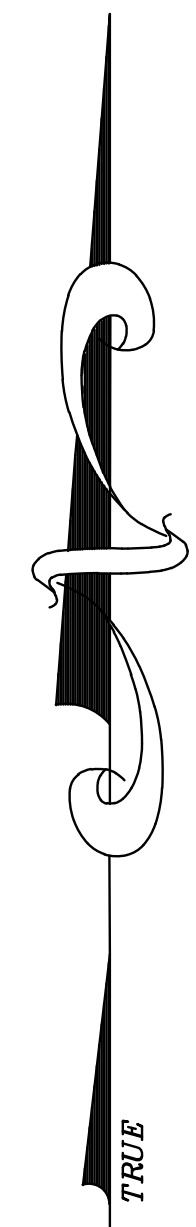
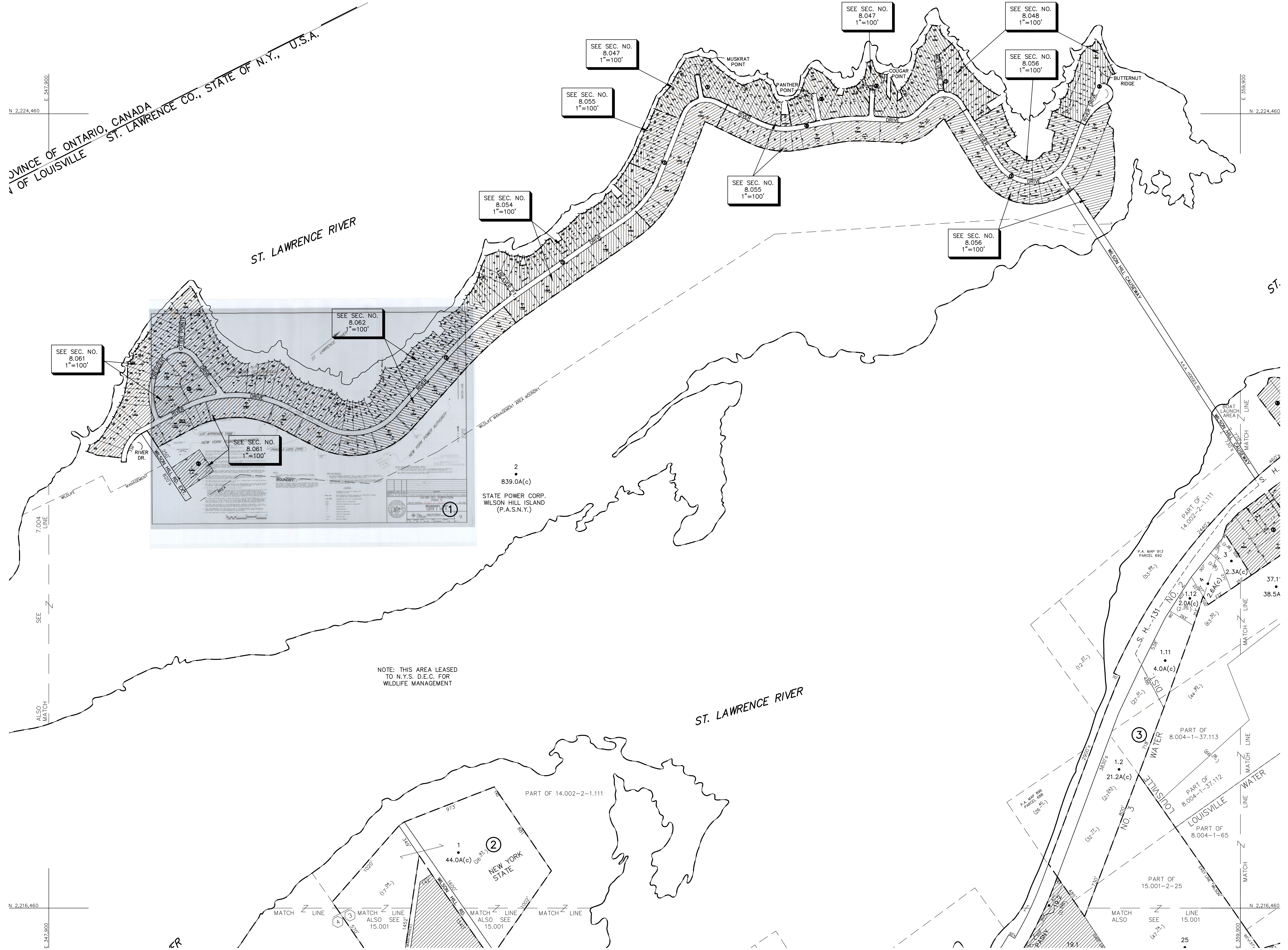


PROVINCE OF ONTARIO, CANADA
 COUNTY OF LOUISVILLE
 ST. LAWRENCE CO., STATE OF N.Y., U.S.A.



NOTE: THIS AREA LEASED TO N.Y.S. D.E.C. FOR WILDLIFE MANAGEMENT

THIS MAP WAS PREPARED FOR TAX PURPOSES ONLY
 NOT TO BE USED FOR CONVEYANCE

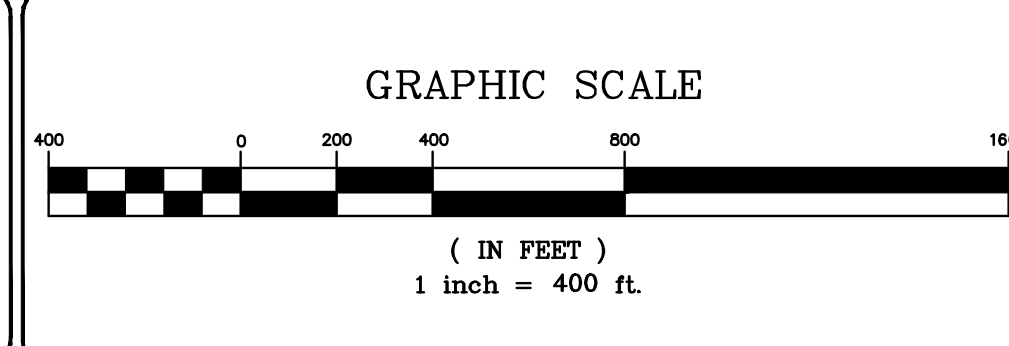
UNLESS DRAWN OTHERWISE, ALL PROPERTIES ARE WITHIN THE FOLLOWING DISTRICTS:

SCHOOL	455801	WATER	M0028
FIRE	17002	SEWER	
LIGHT		AGRICULTURAL	

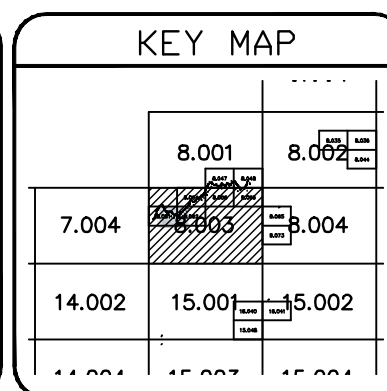
NOTICE OF DISCLAIMER
 This map represents a compilation of graphical and textual information from deeds and surveys, a planimetric base map, and digital conversions of hand drawn mylar maps. Errors and omissions can occur from each of these sources; each source represents a large number of records and originators of information. As a practical matter, the County does not warrant the accuracy or completeness of the information portrayed. The end user of these maps agrees to accept the data "as is" with the full knowledge that errors and omissions may exist, and to hold harmless the County for any damages that may result from an inappropriate use of these maps.

DRAWING LEGEND	
International Boundary	— — — — —
County Boundary	— — — — —
Town Boundary	— — — — —
Village Boundary	— — — — —
Property or R/W Line	— — — — —
Denotes Common Owner	Z
Railroad	—+—+—+—+—+—+—
Water	~~~~~
Block Limit Line	— · — · — · — · — · — · —
Special District Line	— · — · — · — · — · — · —
Subdivision Lot Line	— · — · — · — · — · — · —
Block No.	①
Parcel No.	27
Subdivision Lot No.	(10)
Deed Dimension	112'
Scaled Dimension	27' (27.31')
Deed Area	
Calculated Area	148.2A(c)

ST. LAWRENCE COUNTY NEW YORK REAL PROPERTY
 COUNTY OFFICE BUILDING
 CANTON, NEW YORK 13617
 (315) 379-2272 OFFICE
 (315) 229-3222 FAX



NO.	REVISIONS	DATE	BY
7			
6			
5			
4			
3			
2			
1			



TOWN OF:	LOUISVILLE
DISTRICT NO.:	405289
Date of Conversion	03/01/08 LDC

SECTION NO.	8.003
PROPERTY MAP	