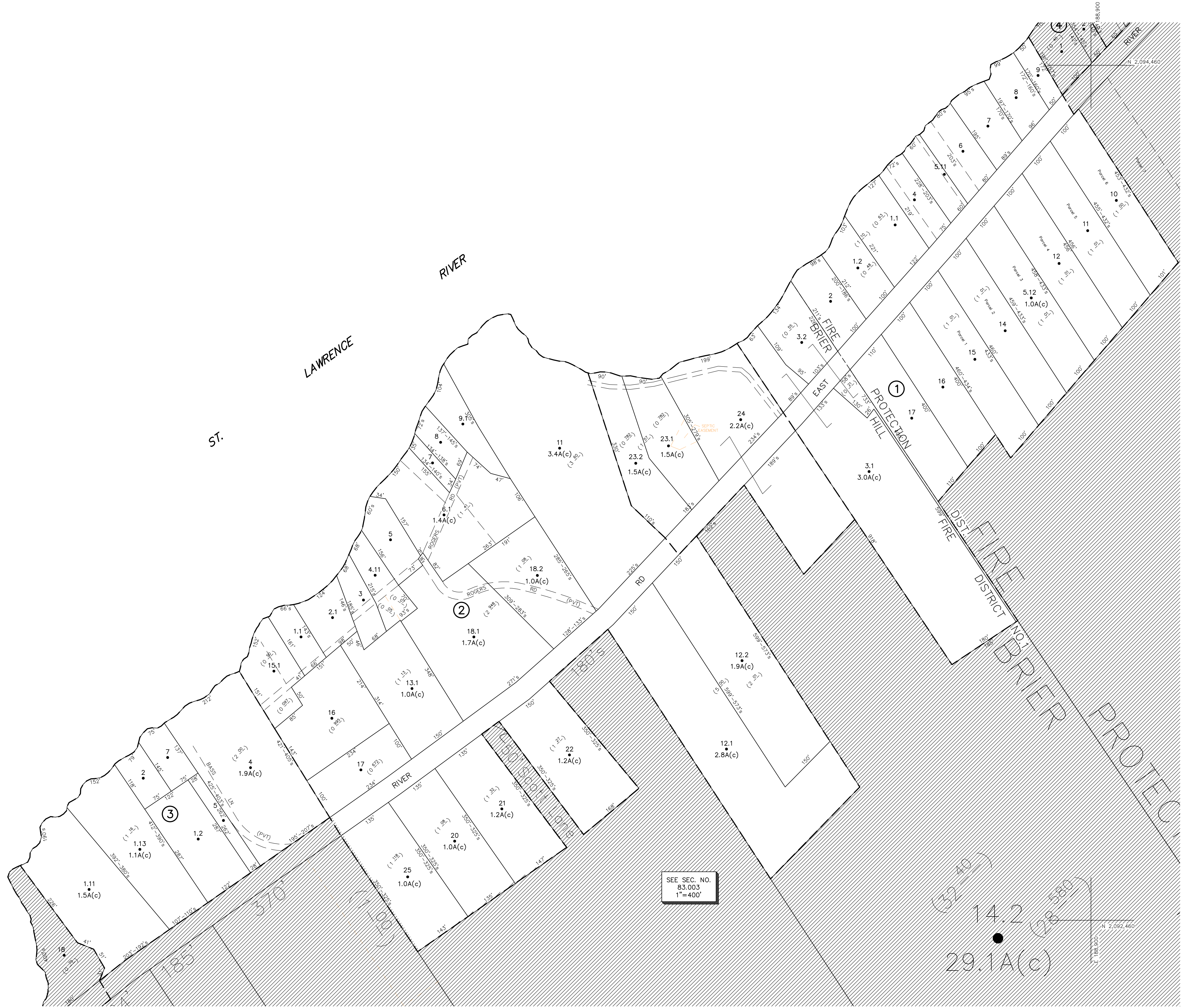
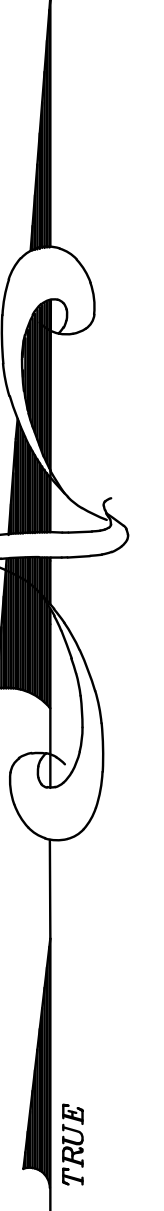


N 2,094,460
E 185,900

E 2,092,460
E 185,900



UNLESS DRAWN OTHERWISE, ALL PROPERTIES ARE WITHIN THE FOLLOWING DISTRICTS:

SCHOOL	400001	WATER	
FIRE	70007	SEWER	
LIGHT		AGRICULTURAL	

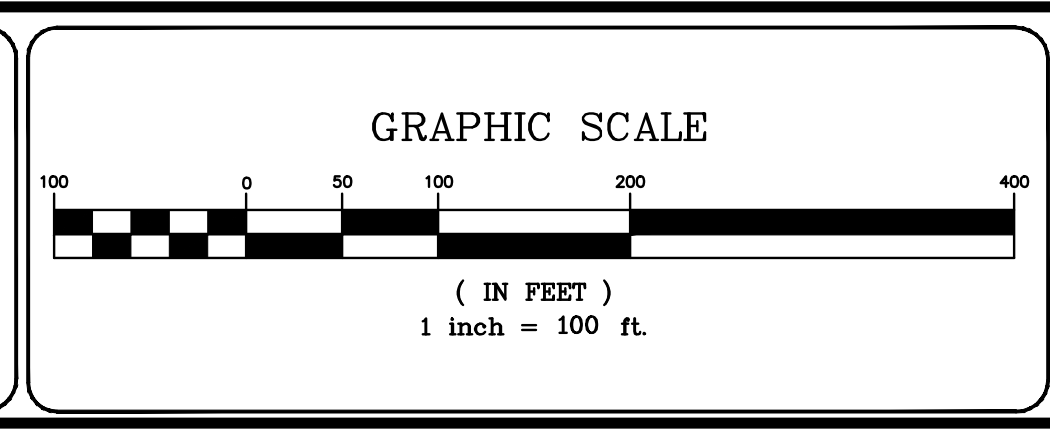
THIS MAP WAS PREPARED FOR TAX PURPOSES ONLY
NOT TO BE USED FOR CONVEYANCE

NOTICE OF DISCLAIMER
This map represents a compilation of graphical and textual information from deeds and surveys, a planimetric base map, and digital conversions of hand drawn mylar maps. Errors and omissions can occur from each of these sources; each source represents a large number of records and originators of information. As a practical matter, the County does not warrant the accuracy or completeness of the information portrayed. The end user of these maps agrees to accept the data "as is" with the full knowledge that errors and omissions may exist, and to hold harmless the County for any damages that may result from an inappropriate use of these maps.

DRAWING LEGEND

International Boundary	—————	Denotes Common Owner	Z
County Boundary	—————	Railroad	—————
Town Boundary	—————	Water	—————
Village Boundary	—————	Block Limit Line	—————
Property or R/W Line	—————	Special District Line	—————
		Subdivision Lot Line	—————

Block No.	①
Parcel No.	27
Subdivision Lot No.	(10)
Deed Dimension	112'
Scaled Dimension	27'
Deed Area	(27.3)
Calculated Area	148.2A(c)



7			
6			
5			
4			
3			
2			
1			
	REVISIONS	DATE	BY

KEY MAP

83.055	83.056
83.057	83.058
83.059	83.060
83.061	83.062
83.063	83.064
83.065	83.066
83.067	83.068

TOWN OF: MORRISTOWN
DISTRICT NO.: 406089
Date of Conversion: 11/20/08 JIM

SECTION NO.
83.063
PROPERTY MAP