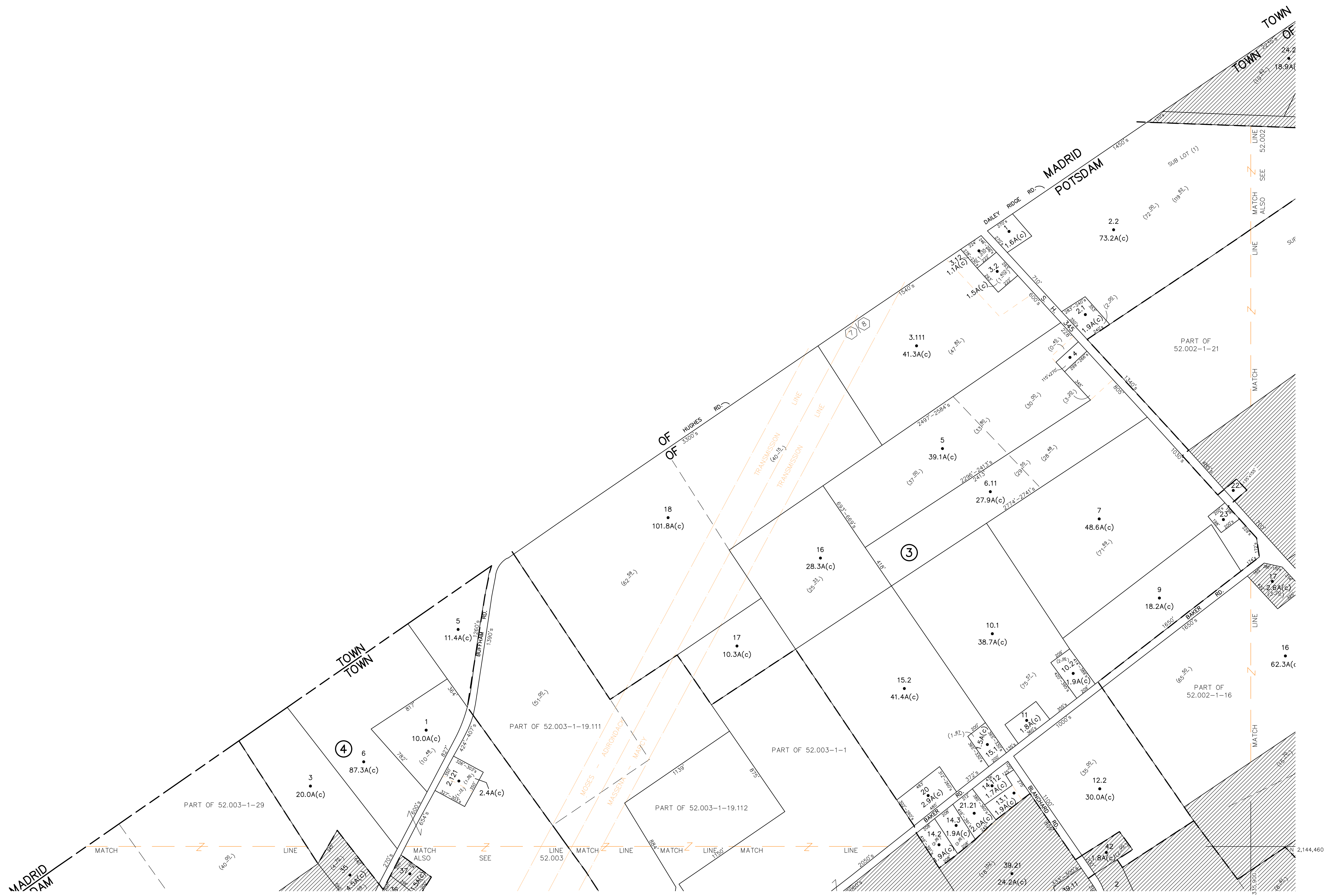


N 2,152,460
E 323,900

N 2,152,460
E 335,900



UNLESS DRAWN OTHERWISE, ALL PROPERTIES ARE WITHIN THE FOLLOWING DISTRICTS:

SCHOOL	SEWER
FIRE	AGRICULTURAL
LIGHT	

THIS MAP WAS PREPARED FOR TAX PURPOSES ONLY
NOT TO BE USED FOR CONVEYANCE

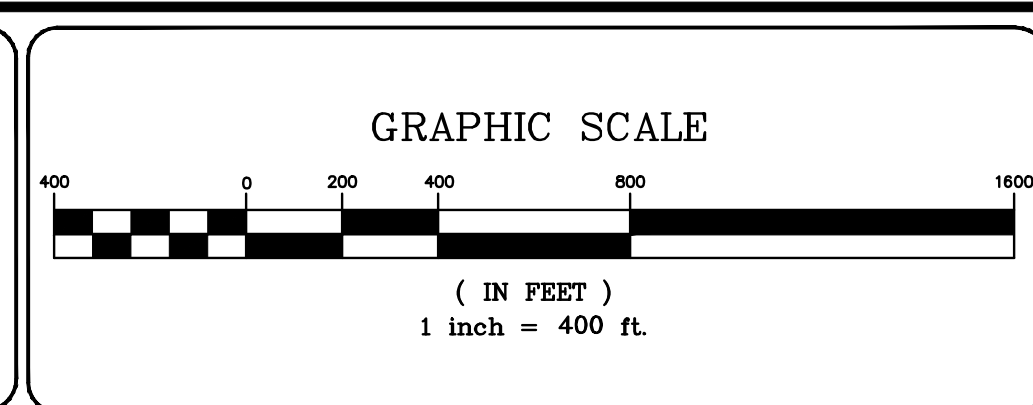
NOTICE OF DISCLAIMER

This map represents a compilation of graphical and textual information from deeds and surveys, a planimetric base map, and digital conversions of hand drawn mylar maps. Errors and omissions can occur from each of these sources; each source represents a large number of records and originators of information. As a practical matter, the County does not warrant the accuracy or completeness of the information portrayed. The end user of these maps agrees to accept the data "as is" with the full knowledge that errors and omissions may exist, and to hold harmless the County for any damages that may result from an inappropriate use of these maps.

DRAWING LEGEND

International Boundary	Denotes Common Owner
County Boundary	Railroad
Town Boundary	Water
Village Boundary	Block Limit Line
Property or R/W Line	Special District Line
	Subdivision Lot Line

Block No.	1
Subdivision Lot No.	27
Deed Dimension	112'
Scaled Dimension	27"
Deed Area	27.3±
Calculated Area	148.2A(c)



NO.	REVISIONS	DATE	BY
7			
6			
5			
4			
3			
2			
1			

KEY MAP

51.004	52.003	52.002	41.004
52.002	52.004	52.002	
62.002	63.001	63.002	

TOWN OF: **POTSDAM**
DISTRICT NO.: **407489**
Date of Conversion: 8/1/2009 LDC

SECTION NO.
52.001
PROPERTY MAP