

NOTE: A SERIES OF SQUARE OR RECTANGULAR PARCELS (OF LESS THAN ONE ACRE) HAVING TWO OR FOUR EQUAL SIDES ARE USUALLY DIMENSIONED ON THE FIRST AND LAST LINE OF THE SERIES ONLY. ALL THE OTHER PARALLEL LINES IN THIS SERIES OF LOTS ARE TO BE CONSIDERED AS BEING THE SAME LENGTH.

APPROVED BY NEW YORK BOARD OF EQUALIZATION AND ASSESSMENT

CASE NO. 1447
J TAGGART (AUTHORIZED SIGNATURE)
DATE JUNE 13, 1978

THIS MAP WAS PREPARED FOR TAX PURPOSES ONLY
NOT TO BE USED FOR CONVEYANCE

NOTICE OF DISCLAIMER
This map represents a compilation of graphical and textual information from deeds and surveys, a planimetric base map, and digital conversions of hand drawn maps. Errors and omissions can occur from each of these sources; each source represents a large number of records and originators of information. As a practical matter, the County does not warrant the accuracy or completeness of the information portrayed. The end user of these maps agrees to accept the data "as is" with the full knowledge that errors and omissions may exist, and to hold harmless the County for any damages that may result from an inappropriate use of these maps.

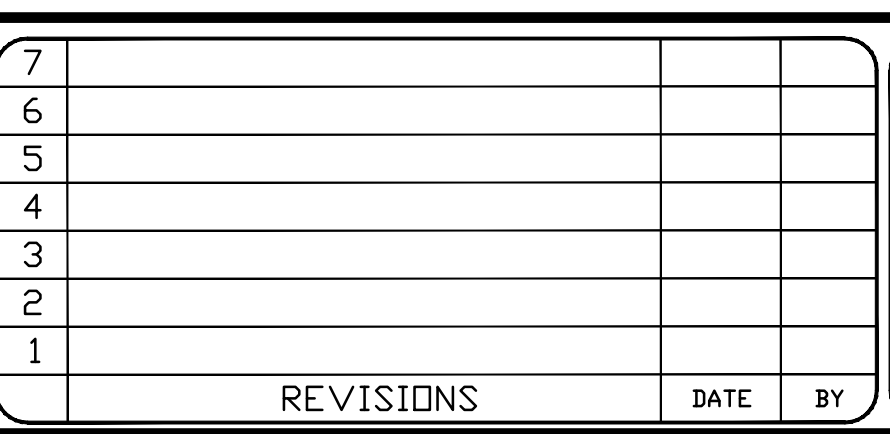
DRAWING LEGEND

International Boundary	— — — — —	Denotes Common Owner	①
County Boundary	— — — — —	Railroad	27
Town Boundary	— — — — —	Water	(10)
Village Boundary	— — — — —	Block Limit Line	112
Property or R/W Line	— — — — —	Special District Line	27's
		Subdivision Lot Line	(27.31)
		Block No.	148.2A(c)
		Parcel No.	
		Subdivision Lot No.	
		Deed Dimension	
		Scaled Dimension	
		Deed Area	
		Calculated Area	

ST. LAWRENCE COUNTY
NEW YORK
REAL PROPERTY
COUNTY OFFICE BUILDING
CANTON, NEW YORK 13617
(315) 379-2272 OFFICE
(315) 229-3222 FAX



NO.	REVISIONS	DATE	BY
7			
6			
5			
4			
3			
2			
1			



TOWN OF:	LOUISVILLE
VILLAGE OF:	MASSENA
DISTRICT NO.:	405201
Date of Conversion:	10/30/06 JIM

SECTION NO.
INDEX
PROPERTY MAP